

Turning Times

THE OFFICIAL NEWSLETTER OF THE CASCADE WOODTURNERS

JULY 2015

Please make sure that all content for the next newsletter reaches me by the 30th of July! turningwood@bendbroadband.com Thanks!

NEXT MEETING: 6:45PM, THURSDAY, JULY 16th AT WILLAMETTE CARPENTERS TRAINING CENTER

Cascade Woodturners will be meeting at

WILLAMETTE CARPENTERS TRAINING CENTER

4222 NE 158TH Ave, Portland, OR 97230-4906

(For a map, click here <http://mapq.st/1o8wBN0>)

Use the South door in the middle of the side parking lot

Presidents Message

Well we had a wonderful time with Soren Berger. What an outstanding turner – I was amazed as I watched him shape pieces of wood into fantastic pieces of art. What I enjoyed most was his soft approach – as I ran the camera I could see when he got a catch or something didn't go as planned - Soren didn't react and the group didn't even seem to notice. What a master. The hands on class was the absolute best for teach folks turning techniques.

The name tag sign up went very well – thanks to all that got a new name tag – now everyone that has one needs to remember to wear their name tag to the meetings. Phil can make more- you just need to provide him the money, your name and address at the club meeting and he will mail you one.

Tools Sale Table – As I mentioned at the June meeting, the Board has agreed to experiment with a monthly tool sale table. Any one that is 2015 paid Cascade Club member can sell wood working tools at our monthly meeting. The criteria for this to work is as follows:

1. The tools sale table is only available for you to sell wood working tools – not wood or other stuff.
2. The club only provides the table and opportunity to display your tools for sale.
3. Each sale is strictly between the buyer and seller. The seller must be a 2015 paid in full member of Cascade Woodturners.

4. Cascade Woodturners does not warrant the quality or condition of anything being sold, and will not be responsible for defects or injuries.
5. All tools sales discussions/transactions must be done before the beginning of the club meeting – normally 6:45pm.
6. After a 6 months or so we will reevaluate the benefits of the tools sale table and decide our future course of action.
7. Feedback is always welcomed.

Coming Events - Our 16 July club meeting will have Dan Tilden from Ashland, Oregon. Dan is a young and creative turner. See some of his creations at www.tildenwoodturning.com . Dan is a young, energetic and creative turner. He likes to experiment with new techniques and designs. Don't miss him - everyone will enjoy this evening with Dan.

We have cancelled our August Club picnic. We will have a normal August club meeting on 20 August and still celebrate our 25th anniversary. We plan to have a celebration with cake and bug juice. We have three members that were part of the original startup of the club – Dale Larson, Howard Borer and Jim Hall. They will spend some time recalling some of the unique events of the past 25 years. Also, Steve Newberry will do a short demonstration – it's a surprise! There is a date change for our September Club meeting. The meeting will be held on 24 September and feature Molly Winton. She will also hold an “all day demonstration” on 25 September and an “all day hands on class” on 26 September. I will start the signup sheets for Molly at our July meeting – sign up early, space will be filled up quickly.

Peter Gibson – President gibsop@yahoo.com 971-409-6022

CLUB REMINDERS:

We all use end sealer at one time or another, so it's important we keep Jim Piper in 1 gallon jugs so he can buy in bulk and sell at a great low price. I asked my wife to save the 1 gallon bleach jugs from the laundry and the 1 gallon vinegar jugs from the cleaning chores. It seems vinegar mixed 50% with water is a great all-around cleaner, especially for windows. If only half of us brought one jug every other month we'd drown poor Jim in them, so let's try.

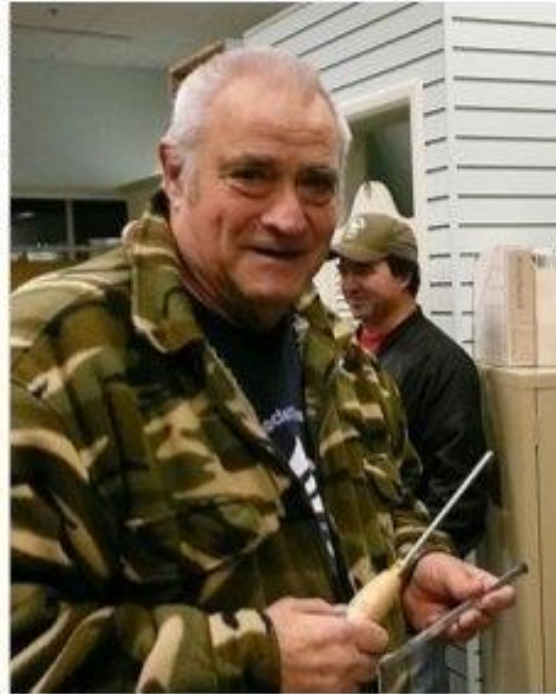
Sell your wood turning tools (and only wood turning tools - not wood, not other stuff), that you don't need or use anymore at the club meeting. CWA does not warrant the quality or condition of items being sold, and will not be responsible for defects or injuries. The club is not involved other than to provide a table for paid-up club member to display tools they wanted to sell to other folks at the meeting. Each sale will be a private transaction and the seller would be responsible to remove any unsold items they have placed on the table once the meeting was over. The item should include a card or tag with a description of the item, the price, and the seller's name. This form of tool sale will be before the meeting so come early so you don't miss out on a great buy.

DALE'S CORNER

No open shop in July. This is family month.

Dale

REMEMBERING BOB MACH



BOB MACH 1938 - 2015

We will be missing a familiar face at Cascade events with Bob Mach's passing. Bob had been battling health problems for a number of years. In May he missed the Utah

Symposium which was one of Bob's favorite events.

Bob was born in Yankton South Dakota. Bob was an Army veteran, worked in the woods, repaired ships as a pipefitter along the West coast and outfitted clean rooms at Intel. He commented that while working at Intel, he couldn't wear after shave as the scent could contaminate the job site.

Bob began turning 14 years ago with his brother Jerome. Bob tried any type of turning while attending most of the hands on classes offered by our club but pen making was his favorite. Bob was first at the Thursday meetings ready to set up chairs and haul in the raffle wood. Before his health problems, Bob was very active in club activities. Like Will Rogers, to Bob, a stranger was a friend he had yet to meet. He was always sharing a new pen type or new tool to club members. He enjoyed finding "deals" like tools to buy in quantity for a discount for club members. Bob will be remembered.

AAW NEWS

I'm sure that the 29th AAW Annual International Symposium can be counted as one of our success stories. We had somewhere over 1,450 participants for the 3-day event. The feedback we had was positive. The individual members that I talked with liked the rotations and thought it was a great event. The Trade Show was good and of course I came home with a few purchases tucked into my luggage. The biggest complaint was the size of the Pittsburgh Convention Center – I can attest to its size. Each day that I was there, I never left the building but put on between 6

Turning Times

and 7 miles according to my Fitbit. It was good to see several members from Cascade as well as other Oregon and Washington clubs. Dale was the liaison to work with the local club members in running the tool room.

My charge was overseeing the Instant Gallery and transporting art from the IG to auctions and critiques. We had some 1,274 pieces in the IG. They were mind-boggling. One could easily spend hours viewing the pieces on display. There was some incredible work in all areas of the IG. If you're on Facebook, you may have seen some of the hundreds of photos Andi Wolfe posted. Here is a link to the awards page with photos of the award winning pieces <http://www.woodturner.org/news/239886/AAW-29th-Annual-International-Symposium---2015-Awards.htm>

These are a few of the hundreds of images Andi posted.



Eli
Avisera



Cynthia Carden Gibson



Christian Buchard



Derick Weidman

Turning Times



Steven Kennard



Molly Winton



John Wessel



J. Paul Fennel



Jim Christiansen



Larry Stevenson



One piece I want to mention was the Egg Crate donated by Women in Turning (WIT). 51 women rose to the challenge and each donated an egg. WIT is a new virtual club and this was our first collaborative activity. Our crate sold at the EOG auction for \$9,000.00! I'll bet you knew the price of eggs has gone up but didn't know it had gone up that much!

As always, if you'd like more information about AAW, contact me.

Kathleen Duncan

SAFETY FIRST

Breathing is good, part 3: Sucking and Blowing

Before I give you thoughts on sucking and blowing I have two safety bits for you from the AAW Symposium in Pittsburgh.

First: The AAW has a safety committee, and it is working on significant upgrades to the safety information that AAW provides on its website. I'm excited about this because I have found it hard to find reliable, quality information about complex safety issues. I hope the AAW's efforts will provide that kind of information. I will keep you posted.

Second: the symposium manual had an image of a wonderful sign that pretty much sums up most of the important safety issues related to using a lathe. The bright yellow sign says:



Now for the sucking and blowing.

Last month's safety article talked about how dust gets into our tubes, and noted that the worst dust to have deep in your tubes is the really small stuff. There are two basic ways to keep the really small stuff out of your tubes: sucking and blowing. This article explains why you may want to suck, why you may want to blow, and why it may be best to do both.

A dust collector for your lathe sucks air away from the lathe, runs the air through a filter, and then blows it back out. If your dust collector is located inside your shop, the quality of the filter is very important, because anything the filter doesn't trap gets blown back out into the shop where you can breathe it. A dust collector located outside your shop blows the particles outside your shop and makes the filter less important.

Different filters filter differently, and, sadly, you will probably have to pay more for a filter that captures really fine particles, like a HEPA (high-efficiency particle arrestance) filter. Because the worst dust is the really small dust, I think it makes sense to pay up for filters that trap the really small particles.

The location of the dust collection tube or hood and the volume of air the dust collector sucks are also important. If the dust collection tube or hood is close to the spinning wood on the lathe it has the best chance of sucking the fine dust into the collector before it escapes into the rest of the shop. And the more air the dust collector sucks, the more dust will be drawn away from the lathe and into the dust collector.

You can purchase dust filters that hang on the ceiling of your shop. But those ceiling filters only remove the dust particles after they have floated by your mouth and nose up to the ceiling. That means the ceiling collectors are less effective in keeping you from breathing fine particles of dust in your shop, even if the ceiling filter traps really small particles of dust.

If you are going to invest in dust filtering and collection equipment, I think it makes sense to invest in equipment that sits close to the spinning wood and sucks lots of air away from the lathe into filters that trap really small particles of dust. If getting good filters isn't feasible, see if you can locate the dust collector outside.

You might be wondering whether it is reasonable to just use a dust mask. Simple dust masks are better than nothing.

Most dust masks have you suck air through the mask. If your face is soft and smooth like a baby's bottom, and the curve of the dust mask closely matches the curves of your cheeks and chin, very little air might get sucked in along the edges of the mask. That's what you want, because the air sucked along the edge of the mask carries dust particles. And that is why better dust masks have flexible rubber edges that cover a lot of your face and conform to its curves.

Paper dust masks, and lots of others, really don't conform to the curves of your cheeks and chin, and don't do a good job of keeping the dust out of your tubes – too much dust-laden air slips by the edge of the mask and into your lungs. Beards are also a problem for dust masks, because the hair keeps the mask from sealing against your face.

For those of you, like me, whose faces are not as soft and smooth as a baby's bottom, it's better to use something on your head that blows. These are called PAPRs (powered air filtration respirators), and they work by sucking air in through a filter and blowing the filtered air out into your helmet or mask. Because the filtered air is blown into the mask or helmet, creating positive air pressure, dust-laden air can't get in around the edges of the mask when you suck air into your lungs. Of course, the quality of the filter on these devices is very important; if dust gets blown into the mask you will breathe it.

The best PAPRs were developed for use by industry, and they are expensive. I was able to find a reconditioned 3M PAPR for close to half its retail price. PAPRs may have other benefits. Most PAPRs include a face shield. I find the airflow in my PAPR prevents my glasses from fogging, which they sometimes do with a simple face shield. My PAPR is sort of a pain to put on, but once it is on it is quite comfortable, and I tend to forget I'm wearing it.

If you use a dust mask or a PAPR, you are going to want to take it off sometime. I routinely tilt my visor up when I'm not actually turning. If you don't have decent dust collection at your lathe, when you take the mask off you will start breathing shop air. If that air is full of small dust particles you will suck them into your tubes.

My step-dad had emphysema from smoking. That resulted from him sucking too many small smoke particles deep into his tubes. Every morning when he woke up he had to struggle to catch his breath; the sound of him trying penetrated every room in the house. It's quite frightening to hear someone struggling to breathe and sounding like he may not be able to.

That's probably why I have both a dust collector and a PAPR.

Dust filtration and collection is a difficult issue for these reasons:

1. A single particle of dust won't kill you and it's hard to be sure how much dust you can breathe before it messes permanently with your breathing. You may be able to breathe a lot of fine dust before you have a problem, but you may get sensitized and have a problem really early. Once you have a problem it may be too late to do much about it. That means it is really easy to procrastinate, and put off doing things to improve the air in your shop.
2. High quality dust filtration and collection isn't cheap. You could buy a lot of nifty tools or wood for the same price.
3. Dust filtration and collection isn't "cool." Most of us love tools, but how many of us would brag to our fellow turners that we just got a great new HEPA filter?

It's easy to procrastinate getting dust filtration and collection, the stuff is costly, and it isn't cool. But if you don't get it and use it, could be really awful for you. IMHO, if you can, you really should try to suck *and* to blow as much as you can every time you use your lathe.

If you have questions about turning safety or other comments please send them to me at CWASafetyOfficer@gmail.com. I will research them and let you know what I find out.

Harvey Rogers

TIPS & TRICKS

Turning Punky Wood

by
Wally Dickerman

I agree with the saying...Life is too short to turn crappy wood... However once in a while a piece of wood comes along that comes under the crappy wood description but has great figure and spalting and is worth giving it a try. I've tried the usual solutions, CA glue, commercial hardeners etc. None of them seem to work well enough for me. I decided to try something different. A 50/50 mix of white glue (Elmers) and water. White glue is mostly water so adding more just makes it thinner, giving better penetration.

After acquiring the right piece of wood I managed to rough turn a bowl that was quite soft in places. I mixed a gallon of glue and water and using a round plastic container, soaked the bowl for about 24 hours. I had to weight it down with a rock because it wanted to float in the mostly water solution. The wood was dry to begin with but during the soak it had absorbed quite a bit of water. I allowed it to dry for a couple of weeks before putting it back on the lathe. It had warped a bit but I had allowed for that by leaving the walls a bit thicker than I usually would. I carefully finished turning the bowl with no problems. The soft areas had firmed up nicely. It sanded well and I applied a coat of brush on lacquer (Deft) to further seal the soft areas before applying several coats of Daly's Ben Matte oil. The glue soak worked!!...The lovely piece of wood was saved and I had a very nice bowl.

Since that first one many years ago I've saved quite a few pieces. It doesn't always work but often enough to make it worthwhile to try.

An important plus...If there are some small cracks most will disappear. The wood swells and you are soaking it in glue.

The glue soak does affect the finish a bit so do a little experimenting with your favorite finishes. I save the leftover glue mix in a plastic jug for the next time.

MEETING SCHEDULE 2015

DATE	DEMONSTRATOR	CHALLENGE
JUL 16	Dan Tilden	Scoops
AUG 22	CWA 25th ANNIVERSITY PARTY	
SEP 24	Molly Winton (<i>Note date change</i>)	
OCT 15	Club Annual Auction	
NOV 19	Lloyd Dewerff	

SYMPOSIUM SCHEDULE

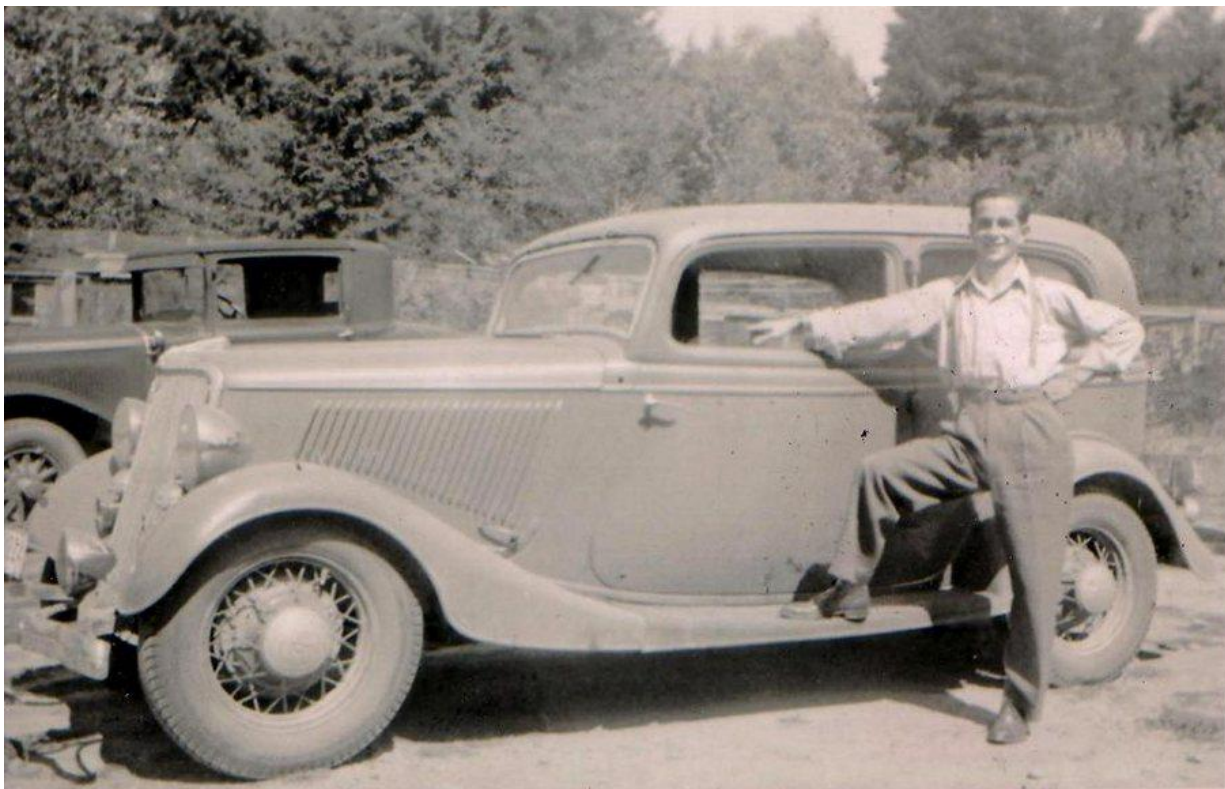
There is something planned for every month that may match your travel plans:

- Woodturners of Olympia Symposium, Olympia, WA, July 25th, 2015
- SWATurners Symposium, Waco, TX August 21st-23rd, 2015
- 16th Rocky Mountain Woodturning Symposium, Loveland, CO September 18th-21st, 2015
- Turning Southern Style XXI Symposium, GAW September 18th-20th, 2015
- 7th Annual Wisconsin Woodturners Expo, Eau Claire, WI October, 2015
- Ohio Valley Woodturners Guild, Harrison, IN, October 9th-11th, 2015
- Fresh Cut Symposium- North House Folk School, Grand Marias, Minn, Oct 30th- Nov 1st, 2015

If you hear of an interesting symposium, e-mail Jerry Klug to add it to the list.

MEMBER NEWS

Last month, Wally Dickerman was featured with some of his turnings pictured. This month you can see a picture of Wally with his car. Great taste in wheels, Wally.



Wally Dickerman when he was a teen with his Ford.

See more of Wally's turnings at...

<http://www.aawforum.org/photopost/search.php?searchid=205609>

COMING EVENTS

July 16th – Cascade Woodturners, Dan Tilden Demo, www.tildenwoodturning.com



Dan Tilden's work

July 25th – Olympia Symposium with Richard Raffan,
<http://www.woodturnersofolympia.org/2015-symposium-and-workshop-schedule.html>

Aug 20th – Cascade Woodturners 25th Anniversary, Carpenter's Hall, Portland

Sept 24th – 26th – Cascade Woodturners – Molly Winton, Demo & Class

Oct 15th – Cascade Annual Auction

DEMOS - CLASSES – SEMINARS

Multnomah Arts Center: Multnomah Arts Center in SW Portland continues to have woodturning classes. Check their catalog or phone 503 823 2787. You can goggle their website for the catalog. Jerry Harris and Russ Coker are again teaching woodturning at "Multnomah Arts Center" in July. There is a one day class on July 11 from 10am to 2pm and a two day class on July 18 and 25 from 10am to 2pm. If you are interested, please contact Multnomah Arts Center at 503 823 2787. The cost is very reasonable and all tools, wood and equipment is provided.

Franklin High School Classes: There will not be turning classes at Franklin High for at least two years. Anyone interested in 1-on-1 lessons in my shop in eastern Damascus should feel free to contact me: phone number is 503-658-3409 and email is "howardborer@yahoo.com".

Rockler Woodworking 503-672-7266, www.rockler.com

- What's Turning Day: Learn how to turn a pen on a Jet Lathe July 18th – 11AM
- What's Turning Day: Learn how to turn handles for Pizza Cutter & Bottle Opener Aug 22nd – 11AM

Woodcraft 503-684-1428, www.woodcraft.com

- Pen Turning, \$40, Sun, July 19th, 12:00-3:00
- Turning A Lidded Box Demo by Tim Kluge, Sat, July 25th 1:00-2:00

Turning Times

- Casting Hybrid Alumalite Turning Blanks Demo by Mike Meredith, Sat Aug 1st 1:00-2:00
 - Beginning Lathe Turning by Tim Kluge, \$125, Sat, Aug 8th 10:00-4:00
 - Basic Bowl Turning by Tim Kluge, \$75, Sun Aug 9th 10:00-4:00
 - Turning A Lidded Box by Tim Kluge, \$150, Sun, Aug 23rd 10:00-4:00
 - Casting Hybrid Alumalite Turning Blanks by Mike Meredith, \$150, Sat. Sept 5th 10:00-5:00
 - Pen Turning, \$40, Sun, Sept 13th, 12:00-3:00
 - Beginning Lathe Turning by Tim Kluge, \$125, Sat, Sept 19th 10:00-4:00
 - Basic Bowl Turning by Tim Kluge, \$125, Sun Sept 20th 10:00-4:00
 - Turning A Lidded Box by Tim Kluge, \$150, Sun, Oct 4th 10:00-4:00
 - Pen Turning, \$40, Sun, Oct 25th, 12:00-3:00
- Woodcrafters** 503-231-0226, 212 NE 6th Ave, Portland, www.woodcrafters.us
- Woodturning Yo-Yo's & Tops by Colin Leland, July 18th – 10AM to 3PM

CWT MENTORS

Cascade Wood Turners has a mentoring program and the member turners providing assistance are listed in the “Resources” section of the club’s web page <http://www.cascadewoodturners.com/resources.htm>. These members are available for you to contact if you need help in different areas of woodturning. If you would like to be a mentor yourself and be contacted with woodturning related questions e-mail me at turningwood@bendbroadband.com and I will add you to the list!

COMPANY STORE

Jim is in need of plastic gallon jugs for Anchor Seal. The bottles that are thicker than water bottles are preferred (bleach bottles are great). If a number of members want a certain item, we could be low on it. Please contact Jim Piper, (503) 730-0073 jimpiper@me.com a week ahead of the meeting so he could verify it is not out of stock and set it aside for you.

Company Store Item	Price
Accelerator (for Cyanoacrylate adhesives/CA), sprayer, 8 oz	\$7.00 each
Anchor Seal, one gallon	\$14.00 each
Cyanoacrylate adhesives/CA Thin, Medium & Thick, 2oz bottles	\$5.75 each bottle
Sandpaper – Finkat (for dry sanding)	\$0.75 each sheet
Sandpaper, Klingspoo alum/oxide w/heavy cotton cloth backing suitable for wet sanding (80, 100, 120, 180, 220, 320 & 400 grits)	\$1.25 each sheet
Walnut Oil - filtered, 16 oz	\$4.00 each

There are still a few chem-proof spray bottles available

QUICK LINKS:

There is a listing of web links used by club members in the "Resources" section of the web site <http://www.cascadewoodturners.com/resources.htm> . If you have a favorite or new site that would be useful to club members, e-mail it to me to include it with the list. turningwood@bendbroadband.com

CLASSIFIEDS

To place or continue an ad, contact Jerry Klug at turningwood@bendbroadband.com . We will run ads in the next newsletter after receiving your ad. Let us know if you want your ad continued more than one month.

FOR SALE: Deep and strong bottom bowl gouge, made by Doug Thompson to Ashley Harwood's specifications. This is a brand new gouge I ordered for a club member that is no longer turning and was never picked up \$125 obo – Contact Skip Burke (503) 233-4263 drgramp@comcast.net



FOR SALE: I have a 4 year old Jet 1642 lathe 2 HP model. It's in great shape. The lathe is located in my shop in close in SE Portland. \$1500 is the asking price.

Hamilton Byerly **Byerly Remodeling, Inc.** 2215 SE 32nd Ave. Portland, Oregon 97214
Cell: 503-310-0614 fax: 503-236-6189 email: Hamilton@Byerlyremodeling.com

FOR SALE: African Black Wood - The pieces are 1.5" square in multiple lengths anywhere from 10" to 12" long. I bought more than I needed. Willing to share @ \$.40/inch. Call Ken Kirkman @ 360-687-9866.

FOR SALE: Delta 46 460 lathe with Delta stand. Nearly new. Less than half retail price....\$390, Assorted tools; some nearly new. Gouges, scrapers and more. Priced to sell. Ten inch disc sander, nearly new (Includes extra sanding discs).\$30. Assorted accessories. Calipers, screw chuck and more.

Wally Dickerman 503 284 7260 wallydickerman@gmail.com

FOR SALE: #1 Kell Mcnaughton Center Saver (old style): gently used this is a big and a small set, it is complete asking \$250.00, 4" Faceplate: steel, 1 1/4"x8 threads asking \$30.00

Penn State Chip Extraction Blower; gently used Tempest 2 (Red Paint), 2 HP, 12" impeller, muffler, 2 cartridge air filters, 1 small paper collection can, one metal garbage can, wall mount bracket, all piping and blast gates go with asking \$600.00

Jet air cleaner; Used little # AFS-1000B, w/remote, 3spd, 3 time setting asking \$200.00
Neil Fraedrich (503) 655-7767 neilglor@comcast.net

FOR SALE: Jamison Hollowing System unused
(Ed Note: It works better if the tool holder end is towards the spindle) – Contact Skip Burke (503) 233-4263
drgramp@comcast.net



FOR SALE: Oregon Burl and Blank

- Hardwood and softwood burls
- Hollow form turning wood
- Pen blanks
- Bowl blanks
- Cut to order

Recently sold and/or current material - Douglas Fir root burl, Maple burl slabs, Cherry burl bowl blank, Madrone pen blanks, dimensional rough sawn Cherry boards, Madrone, Pacific Yew, Oregon White Oak, Black Walnut, Oregon Ash

For pricing and pictures call Brandon Stadel 503-409-5677 brandonstadel@yahoo.com

FOR SALE: I am retiring from the wood business and have a stubby lathe to sell. I bought the lathe from John Jordon at the Tacoma AAW. It's a great lathe but I am not using it anymore. I have about 20 various chisels, Axminster 4 jaw, two center steadys, extra side bed, bed extender to 5' 2", lots of faceplates, I'm asking 5k, John Dickinson 541 459 5752



FOR SALE: Unused LazyBoy powered lift chair. I got back to walking without using it.
Contact Skip Burke (503) 233-4263 drgramp@comcast.net



FOR SALE: Over 18 tons of interesting turning wood logs and chunks in Vancouver;

<i>Apricot</i>	<i>Carob</i>	<i>Magnolia</i>
<i>Avocado</i>	<i>Cherry</i>	<i>Maple (big leaf)</i>
<i>Black locust</i>	<i>Elm</i>	<i>Maple (hard)</i>
<i>Black walnut</i>	<i>English laurel</i>	<i>Norway maple</i>
<i>Blue spruce</i>	<i>English walnut</i>	<i>Ornamental mulberry</i>
<i>Bottle brush</i>	<i>Juniper</i>	
<i>Camphor (Calif. Bay Laurel?)</i>	<i>Liquid amber</i>	

Tim also has dried boards and blanks for turning of; *Mahogany, Olive, Chestnut, Redwood, Walnut, Maple, Oak, Purple heart and more.* Tim also has some rocks and fossils for accents. View an interview of Tim at <http://youtu.be/d51wpml80f4>
Prices are about half of retail (i.e. Cook Woods or Craft Supply).
Contact Tim at wtsmall@centurylink.net 360-989-7721.

AAW SYMPOSIUM COMMENT

Symposium was fabulous. To those who haven't been to one, they don't know what they're missing. There's a wealth of unbelievably wonderful wood turned art, demos from the world's best, tools for everyone who's looking for anything (and who's not) and great camaraderie by everyone. And I might add Cascade was well represented by Kathleen. She worked her butt off.

Jim Piper

Turning Times

I think my favorite demonstrator was Avelino Samuel. I really like his work and his presentation style. . Others I liked were Jacques Vesery (talking about form and practicing to improve form), Stuart Batty (talking about proper stance, sharpening and tool use (I was in my shop today practicing holding the tool with my forward hand under the tool the way he recommends)), Ashley Harwood who showed some interesting bowl rims, and Joey Richardson, who is just a hoot to listen to.

It rained most of the days I was in Pittsburgh. I didn't bring rain gear, so I just practiced getting moist on the walk over and drying out in class. Now I'm back in Portland and it's pretty warm and humid. Exactly the opposite of what I would expect.

Harvey Rogers

CASCADE WOODTURNERS OFFICERS AND CONTACTS

President	Pete Gibson	(971) 409-6022	gibsop@yahoo.com
Vice President	Skip Burke	(503) 233-4263	drgramp@comcast.net
Treasurer	Howard Borer	(503) 658-3409	howardborer@yahoo.com
Secretary	Harvey Rogers	(646) 660 3669	harveyrogers@gmail.com
Safety Officer	Harvey Rogers	(646) 660 3669	harveyrogers@gmail.com
Member at large	Bob Mach	(503) 665-6818	
Video Librarian	Geraldine Clark	(503) 978-1973	clark7291@comcast.net
Book Librarian	Mike Worthington	(503) 640-0373	mikedw47@comcast.net
Company Storekeeper	Jim Piper	(503) 730-0073	jimpiper@me.com
Web Mistress	Kathleen Duncan	(360) 574-0955	woodspinner@gmail.com
Newsletter Editor	Jerry Klug	(541)550-6299	turningwood@bendbroadband.com

CASCADE WOODTURNERS SPONSORS

Support of the sponsors listed helps maintain our hobby supplies. Remember that your current membership card is good for discounts at these firms. For additional information see the website <http://www.cascadewoodturners.com/sponsors.htm> .

[Gilmer Wood Company](#) Exotic and Domestic Hardwood from Around the World

[KLINGSPOR Abrasives, Inc.](#) [Rockler Woodworking & Hardware](#)

[Woodcraft Supply](#) **Woodcrafters** Carbide Saw



CRAFT SUPPLIES USA *The Woodturners Catalog* www.woodturnerscatalog.com
1287 E 1120 S Provo, UT 84606 801-373-0919

WOODCRAFTERS
Everything for the Woodworker, and More!

Check Out Our
Woodturning Lathes
& Accessories from
ONEWAY
MANUFACTURING
POWERMATIC
JET

Domestic & Exotic Hardwoods,
Sharpening & Finishing Supplies

212 N.E. Sixth Ave. • Portland, Oregon 97232-2976 • phone: 503-231-0226 • toll-free: 800-777-3709 • www.woodcrafters.us

Razor-Sharp Edge
• M42 Cobalt HSS

Strong Handles
• Made with solid aircraft grade aluminum

Reduced Chatter
• A round bit fits into a round hole for reduced chatter
• Our solid aluminum handles greatly reduces vibration

Carter and Son Toolworks
Quality At Its Best
Made in the USA



Susan & Les at North Woods
service@nwfiguredwoods.com
<http://www.nwfiguredwoods.com/>
 56752 SW Sain Creek Rd
 Gaston Or 97119
 PO Box 808
 Forest Grove OR 97116
 503-357-9953
 800-556-3106



Happy Woodworking to you! Les and Susan!

CARBIDE SAW
Sales & Sharpening

Tad Wille

- Saws
- Custom Cutters
- Routers
- Bandsaws
- Knives
- Abrasives

4040 SE Division
Portland, OR 97202

Ph: 503-235-2260
Fx: 503-233-1807