

Turning Times

THE OFFICIAL NEWSLETTER OF THE CASCADE WOODTURNERS

February 2013

Please make sure that all content for the next newsletter reaches me by the 5th of March! turningwood@bendbroadband.com Thanks!

**NEXT MEETING: 6:45PM, THURSDAY, FEB 21st AT FRANKLIN HIGH SCHOOL
5405 SE Woodward St, Portland, OR**

PRESIDENTS MESSAGE

Let me apologize right up front for missing the February meeting. The wife is taking me on an Eastern Caribbean Cruise to celebrate my birthday. Now which one of us males would be crazy enough to say no? My choice was to either have the club members upset with me for missing the meeting or my wife for declining her invitation. Now I submit to you, that is a no brainer!! The good news is Pete will be there in my stead. As a matter of fact, you just may enjoy him more than me.we will not go there.

It was great to see everyone at open shop. Although my stay was brief, I sure enjoyed seeing everyone. I had to leave due to a family medical emergency in Coeur d'Alene, ID. Steve Newberry will be our presenter for this month. He will be showing us how to make a hook tool. It is pretty cool and the discussion should be lively. You will be amazed at what he can do with the tool and how practical it is.

Keep in mind we have Ashley Harwood coming on March 21. We have enough members (6) signed up for one "hands-on" class for Saturday, March 23. We need an additional four folks to sign up so we can have another "hands-on" class Sunday, March 24. (We have two registrants now.) Should there be too few registered for the 2nd class, there will be a lottery for the 6 slots on Saturday. The \$20 required deposit is applied toward the \$100/ person cost. I encourage you to sign up for Ashley's class. Rarely do we get this opportunity to host a skilled person who can make the bowl gouge "sing". If you are a beginner, do not think you need more time behind the lathe before taking this class. You will be amazed at how fast you will progress using the bowl gouge once you have taken her class. Also keep Friday, March 22, open for her all day demo. The cost will be \$30/person, pay at the door, bring you own lunch. All this fun will occur at Dale Larson's shop.

On April 18 we will have John Beaver. John is famous for making the wave bowl. Take a look at his web site at <http://www.johnbeaver.net> . At the February meeting you may sign up for John's class which will be held on Saturday, April 20. Remember a \$20 deposit is required when signing up.

As Peggy and I care for her folks in Coeur d'Alene, ID, I am reminded how precious life is. I would just encourage each and every one of you to make the most of each and every day the good Lord has given us. As lathe people, I think it means to get out to your shop as often as you can and to take advantage of building relationships with your fellow woodturners while we still have our health.

Remember to be safe when you go out to your shop. Happy turning.....
Ken 360.687.9866
kenpegkirkman@gmail.com

DALE'S CORNER

We had 10-12 turners for the January open shop. Three bowls were turned; two were first bowls for new turners. We sharpened some tools. We will have open shop Saturday February 23rd (the Saturday directly after CWT meeting because of the short month). Open shop starts around 9am. Bring your tools and an idea.

I recently took two trips. In early January the AAW board met in Tampa to help lay out and plan the AAW symposium in June. We will have a great line up of demonstrators so put it on your calendar (June 27-30th). And in the middle of month I went to Mobile Alabama to see a show by Binh Pho. It is at the Mobile Museum of Art. Binh had many pieces there of outstanding work. Binh has a new book out showing most of the pieces. I then went over to New Orleans and spent time with Gorst du Plessis in his shop. Gorst is one of the great ornamental turners around. If you keep turning wood you don't know where it will take you.

Take note of the three closest regional symposiums: Utah symposium May 16-18, Olympia on July 27th, and Rocky Mountain in Loveland Colorado on Sept 14-15. All three put on great shows and travel and housing is reasonable.

Dale
woodbowl@frontier.com

TREASURER'S REMINDER

It's renew your membership time. It went well last year, so let's follow a similar procedure this year.

It's time for me to collect membership dues for 2013. Here's the procedure. Dues are \$25 for one person, \$35 for a family membership and a business.

1. Determine the amount of dues you owe.
 2. Bring cash or a check and a pen.
 3. Get an envelope from me at the January meeting: it has an application and membership card in it.
 4. Fill out ALL the blanks on the form, even if nothing has changed. There are errors in my master list and this is the only way I can correct them. Please print clearly. We get too many email addresses with a "1" instead of an "i", or a "0" instead of an "o".
 5. Put the completed application and payment back into the envelope.
 6. Tuck the tab into the envelope. No need to seal it or write your name on it. The tucked tab will keep the papers inside.
 7. Put the envelope into the plastic tub or hand it to me.
 8. Put your name on the membership card, which goes in your wallet. Enjoy the 10% discount offered by our advertising businesses.
 9. Enjoy the meeting.
- Howard Borer, Treasurer

CASCADE MEMBERSHIP ADVANTAGES

- ❖ Use of the bounteous club library is for club members. Your current membership card or listing on the Cascade Members roster shall be presented before any reference material, library book, Woodturning magazine or CD is checked out.
- ❖ Discounts at local supporting merchants with the showing of your card. See the list of participating businesses at the end of the newsletter.
- ❖ Group order discounts from Craft Supply and other special purchases.
- ❖ Free (???) Wood when members share the location of newly downed trees.
- ❖ Fellowship with the most caring and sharing hobbyist around.

FEBRUARY'S MEETING

Steve Newberry will show how to make a "hook tool" and demonstrate the use of the tool in cutting end grain. This will be a great opportunity to add some metal working to your turning talents. Don't forget to bring that challenge piece. The meeting starts at 6:45 PM.

MONTHLY CHALLENGE

Bring a bangle, broach, pendant, ear rings or nose ring to the February Challenge. Remember that there will be a chance to win a prize but only if you display in the Challenge.

CLUB LOGO CLOTHING

The order for clothing with the Cascade Woodturners logo must go in at the February meeting. See the last 2 pages of this newsletter for styles, colors and sizes.

JANUARY MEETING

January's meeting welcomed our own Keith Strauss as showing us how to make a wooden bracelet. It seems that young daughters, grand daughters and their friends can't get enough of them. Keith turns the bangles on a glued up waste block and finishes them on the lathe. The waste center section is turned into miniature bowls.



Keith's Bracelets
Bracelets and miniature bowls



MEETING SCHEDULE 2013

DATE	DEMONSTRATOR	CHALLENGE
FEB 21	Steve Newberry – Hook Tool	Wearable Turning or Hook Tool
MAR 21	Ashley Harwood – Bowl Gouge	Turned Egg
APR 18	John Beaver – Wave Bowl	Bowl w/Ashley's Technique
MAY 23	<i>Note Date Change TBAL</i>	Wave Bowl
JUN 20	Joe Wagner - Ornament	
JUL 27	<i>Note Date Change</i> Picnic @ Phill Lapp's	Bird House Ornament
AUG 15	Jimmy Clewes	A Plate
SEP 19	Ron Gerton – Turning Enhancement	Something turned fast
OCT 20	Auction	No Challenge
NOV 17	<i>TBAL</i>	Christmas Ornaments

Note some open spaces for our local turners to demonstrate

SECRETARY'S NOTE PAD

Skip Burke is working tirelessly to find news for the Turning Times. The photos show what length Skip will go for Cascade Woodturners.



Skip on Fiji Island



NEW TURNERS

Keith Strauss asked “how many were new turners” when doing his bracelet demo last month. I quickly counted hands and noted around 20+ turners. The attendance at the meeting was close to 80. With that large of a group that consider themselves “new” at turning, I felt that reviewing my learning process may be of some help.

First and foremost is learning safe turning habits. Starting out with proper instruction is paramount. If you use the trial and error method you can develop an unsafe habit that is hard to break. The “learning by example” method has been made easy for you by the number of Cascade members that gladly mentor, teach local classes and assist at the monthly “Open Shop” sessions at Dale Larson’s shop.

Participating in the “Hands On” classes taught by visiting turners will boost your skills up the learning curve faster than you can imagine. We are fortunate to have many of the most recognized professional turners in the world brought to Portland to demonstrate and teach by Cascade. The cost is reasonable and the increase in skill and knowledge is large in the small group classes. These visiting professionals are also used to teaching new turners and will guide you onto your turning experience with safety and confidence.

As Dale mentioned in his column this month, there are nearby symposiums that offer a huge amount of learning in a short time. These are one to three day events; usually three

days of demonstrations, classes, exhibits and sharing that leave you eager to expand your skills with new ideas. Making new turning friends is another way that new turners find very fulfilling too. The symposiums are a great way to meet a large number of interesting sharing people.

Another way to expand your turning knowledge is viewing turners on video or you tube. The club library has a good supply of interesting DVDs on many turning subjects including everything from basic starter projects to exotic art pieces. Google “woodturning” and you get 2,570,000 results. Google “woodturning videos” and you get 590,000 results. Enter “woodturning” on the Youtube search and you get 266,000 results. The question for the new turner is what is worthwhile and what is not. Anybody can tell if the video is poorly made or of a subject matter that does not interest them. The problem is with a “new” turner, the turning techniques that are unsafe or might show incorrect processes may not be apparent. I have viewed videos that demonstrate very dangerous instruction or tool techniques that require hours of sanding to remove tool marks. How do you know what is a good video when you are starting out? You stick to video presenters that are safety and quality conscience. I have assembled a list of presenters that enjoy sharing their turning passion on You Tube. This is not an all inclusive list by any means but it offers a variety of turning information that you can enjoy knowing that these turners are using good practices;

❖ Bob Hamilton	www.bobhamswwing.com	212 videos
❖ Carl Jacobson	www.thewoodshop.tv	183 videos
❖ Captain Eddie Castelin	www.eddiecastelin.com	155 videos
❖ Gwinnette Woodworkers Assn	www.gwennettewoodworkers.com	96 videos
❖ Sam Angelo	www.wyomingwoodturner.com	74 videos
❖ Dennis Montville	www.dwmontville.com	53 videos
❖ Alan Stratton	www.aswoodturns.com	47 videos
❖ Gary Mertl	www.austincreekwoodwks.com	44 videos
❖ Jerry Hall	www.mustardmonster.weebly.com	

Jerry Hall’s site is a compendium of tips and discussions on the Powermatic 3520 lathe. On this site, there is a link ([Free Woodturning Videos Here](#)) to a listing of over 400 videos by some of the above turners and many more videos that the presenter may not have a web site or a large number of videos. Jerry adds new items as they are reported to him.

The last but very important step in my becoming a more accomplished learner of woodturning was to join the AAW. Almost all of the above turners support and promote the AAW. New turners become better turners who become accomplished turners. Some become professional turners and some will be known as great turners, world wide. All great turners owe their success to mentors, teachers and friends that helped them along the way. Joining AAW is one way we all can support, share and participate in woodturning.

Jerry Klug

COMING ATTRACTIONS

Cascade Woodturners:

March 21st: Ashley Harwood, Mar 22nd all day demo, Mar 23rd hands on class

April 18th: John Beaver, Apr 19th all day demo, Apr 20th hands on class



John Beaver "Wave Bowl"

<http://www.johnbeaver.net>



Ashley Harwood bowl

<http://www.ashleyharwood.net>

Northwest Woodturners:

March: Ashley Harwood

Willamette Woodturners:

March 14th demo: Jon McGill – Ornamental Turning with the Rose Engine Lathe

The Fraser Valley Guild is hosting Binh Pho in April.

Contact: Murray Sluys murray.sluys@gmail.com FVWG.ca

Two Hands-on-Workshops with Binh Pho; Cost \$150.00 ea

April 12, 9:00-4:30

At Bow River Specialty Woods, 46501 Ballam Road Chilliwack BC

Bring your own lunch

April 14, 9:00-4:30

At Canadian Woodworker Ltd. 108-5433 152 St Surrey, BC

Bring your own lunch or there are food outlets nearby

A Demonstration Day with Binh Pho; Cost \$35.00

April 13, 9:00-4:30

At Bow River Specialty Woods, 46501 Ballam Road Chilliwack BC

Bring your own lunch

Gathering of the Guilds; One of Portland's premier art events will be April 26, 27, and 28, at the Portland Convention Center. Woodworking, woodturning, pottery, weaving, metal arts, glass, and bead making will all be represented. It is Cascade's intention to share a 10 by 10 booth with Northwest Woodturners. The cost of the booth will be shared by the club treasuries, and will be free to whoever would like to display their work. However, you will be expected to put in some of your time to man the booth. We will need to have a least one person in the booth at all times during the show. We will have a sign up sheet at our January meeting. So please check your calendars for which days and times you could be there. You will be allowed to sell your work to the public, and there will be literally thousands of people walking past the booth. It is your job to get them to stop and buy something. It should be fun; so get to turning with this show in mind. Any questions please direct to GarySundquist@gmail.com or [503-645-2231](tel:503-645-2231).

DEMOS - CLASSES – SEMINARS

Rockler Woodworking 503-672-7266, www.rockler.com

- Pen Turning Demo, Feb 16th, 9:30 AM
- Robert Sorby All Day Turning Tool demo, Feb 18th, 1:00-8:00 PM
- Wolverine Sharpening Jig Demo, March 9th, 10:00 AM
- What's Turning Day – Coffee Scoop Demo, March 9th, 11:00 AM
- Turning Bookmarks Demo, April 6th, 10:00 AM
- What's Turning Day – Manhattan Pen Demo, March 9th, 11:00 AM
- Making Fishnets Demo – Using Rockler Steam Bender, April 13th, 10:00 AM
- Rockler Innovation Day – Steam Bending Demo, April 13th, 11:00 AM

Woodcraft 503-684-1428, www.woodcraft.com

- Pen Turning (\$40) by Mike Shea, Feb 23rd 10:00-1:00
- Beginning Lathe Turning (\$115) by Paul Rasmussen, March 2nd 10:00-4:00
- Pen Turning (\$40) by Staff, March 13th 1:00-4:00
- Pen Turning (\$40) by Staff, March 30th 1:00-4:00
- Platter Turning (\$115) by Paul Rasmussen, March 31st 10:00-4:00
- Beginning Lathe Turning (\$115) by Paul Rasmussen, April 6th 10:00-4:00
- Pen Turning (\$40) by Staff, April 10th 1:00-4:00
- Pen Turning (\$40) by Dave Ward, April 20th 10:00-1:00
- Basic Bowl Turning (\$115) by Paul Rasmussen, April 27th 10:00-4:00
- Pen Turning (\$40) by Mike Shea, April 28th 1:00-4:00
- Beginning Lathe Turning (\$125) by Paul Rasmussen, May 4th 10:00-4:00
- Pen Turning (\$40) by Dave Ward, May 18th 10:00-2:00
- Basic Bowl Turning (\$125) by Paul Rasmussen, May 25th 10:00-5:00
- Beginning Lathe Turning (\$125) by Paul Rasmussen, June 1st 10:00-4:00

Woodcrafters 503-231-0226, 212 NE 6th Ave, Portland, www.woodcrafters.us

- Tool Sharpening with a Tormek, March 23rd, 10:00-3:00
- Woodburning by Dick Armstrong, March 30th, 10:00-3:00

SYMPOSIUM SCHEDULE

There is something planned for every month that may match your travel plans:

- Desert Woodturning Roundup, Mesa, AZ February 22-24, 2013
- Totally Turning 2013, Saratoga Springs, NY March 23-24, 2013
- Southern States XIII Woodturning Symposium, Cartersville GA Apr 26-28, 2013
- Utah Woodturning Symposium, Orem UT May 16-18, 2013
- AAW Symposium, Tampa, FL June 28-30, 2013
- Woodturners of Olympia Symposium, Olympia WA July, 2013
- SWATurners Symposium, Waco, TX August, 2013
- Rocky Mountain Woodturning Symposium, Loveland, CO September, 2013
- Ohio Valley Woodturners Guild, West Harrison, IN October 11-13, 2013
- Wisconsin Woodturners Expo, Eau Claire, WI November, 2013

If you hear of an interesting symposium, e-mail me to add it to the list. Jerry Klug

COMPANY STORE

If a number of members want a certain item, we could be low on it. Please contact Eric G. von Beck at 503-320-5397 or evonbeck@gmail.com a week ahead of the meeting so he could verify that it is not out of stock and set it aside for you.

Anchor Seal has increased their prices so the next shipment may show a rise in price. Retail price at some locations is \$20/gal. We plan to purchase a 55 gal drum to keep the costs down. The problem is storing that much end seal. We have to have process the stock into gallon jugs when it arrives and distribute it to the members quickly.

Company Store Item	Price
Accelerator (for Cyanoacrylate adhesives/CA), sprayer, 8 oz	\$6.75 each
Anchor Seal, one gallon	\$12.50 each
Cyanoacrylate adhesives (CA) - Thin, Medium and Thick, 2oz bottles	\$5.75 each bottle
Sandpaper, Aluminum oxide with heavy cotton cloth backing in 80, 100, 120, 180, 220, 320 & 400 grits	\$1.00 each sheet
Walnut Oil - filtered, 16 oz	\$4.00 each

Eric is in need of gallon jugs for the Anchor Seal. No milk jugs as they are not sturdy enough.

QUICK LINKS:

There is a listing of web links used by club members in the "Resources" section of the web site <http://www.cascadewoodturners.com/resources.htm> . If you have a favorite or new site that would be useful to club members, e-mail it to me to include it with the list. turningwood@bendbroadband.com

CWT MENTORS

Cascade Wood Turners has a mentoring program and the member turners providing assistance are listed in the "Resources" section of the web page <http://www.cascadewoodturners.com/resources.htm>. These members are available for you to contact if you need help in different areas of woodturning. If you would like to be a mentor yourself and be contacted with woodturning related questions e-mail me at turningwood@bendbroadband.com and I will add you to the list!

CLASSIFIEDS

To place or continue an ad, contact Jerry Klug at turningwood@bendbroadband.com . We will run ads in the next newsletter after receiving your ad. Let us know if you want your ad continued more than one month.

Want some wood: Randy Less has a Maple Tree with what looks like fiddleback and birds eye maple in it. He would like to sell the "tree/log" to an interested party. If you are interested, you may call him at [360-852-2317](tel:360-852-2317).

FOR SALE: A neighborhood friend of Jerry Harris gave this lathe to Cascade. It is a Craftsman with a 5" throw, (can theoretically turn 10") and no motor. Jerry will bring it to the January meeting.



FOR SALE: Cheap beginner's lathe for sale. 4-speed Rockwell lathe: 10" swing over bed, 14" swing over gap in the bed, at least 36" between centers, motor needs to be rewired, sheet metal stand with solid sides, 8 Leichtung high carbon tools (no high speed tools), no live center in the tail stock but there's also a ton of dry hardwoods: it looks like the guy did a lot of flat work also.

Mrs. Darlene Daniel 503.706.2296 She lives in Troutdale

FOR SALE: Dayton "5K967" heavy duty electric motor, 3HP, 220V, single phase, unused, new price was \$600. Make a reasonable offer. Jerry Klug (541) 550-6299 turningwood@bendbroadband.com

WOOD: There is a large cherry tree available in St. Johns, about 90 years old, I was told 9 ft. diameter, with what looks like some nice figure and burl if any one is interested. If you are please contact Rebecca Kun at becca.kun@gmail.com

CASCADE WOODTURNERS OFFICERS AND CONTACTS

President	Ken Kirkman	(360) 687-9866	kenpegkirkman@gmail.com
Vice President	Peter Morrell	(503) 267-4730	morrellpete@gmail.com
Treasurer	Howard Borer	(503) 658-3409	howardborer@yahoo.com
Secretary	Skip Burke	(503) 233-4263	drgramp@comcast.net
Member at large	Keith Strauss	(503) 659-7830	strauss.k@comcast.net
Video Librarian	Dawn McClard	(503) 255-3940	grrtshearwater@gmail.com
Book Librarian	Mike Worthington	(503) 640-0373	mikedw47@comcast.net
Company Storekeeper	Eric G. von Beck	(503) 320-5397	evonbeck@gmail.com
Newsletter Editor	Jerry Klug	(541)550-6299	turningwood@bendbroadband.com

CASCADE WOODTURNERS SPONSORS

Support of the sponsors listed helps maintain our hobby supplies. Remember that your current membership card is good for discounts at these firms. For additional information see the website <http://www.cascadewoodturners.com/sponsors.htm> .

[Gilmer Wood Company](#)
[Rockler Woodworking & Hardware](#)
[Woodcrafters](#)

[KLINGSPOR Abrasives, Inc.](#)
[Woodcraft Supply](#)
Carbide Saw



2013 North Woods Customer Survey.

Here's the link to take our (7 minute) survey to get a 20% coupon code and be entered to win \$100 of North Woods wood.

<https://docs.google.com/spreadsheet/viewform?fromEmail=true&formkey=dHNBdnNaN0tVNURsb2JLM2Y3UFdUSIE6MQ>

Would you like to be on the "MENTOR" list on the web site? You could be a resource for newer turners. Contact a Board member to be added and list your areas you prefer to help with.



Cascade emblem for clothing items – Order at the February meeting



Cascade Promotional Items – February 2013

Here are the items that are available. When shown, you can order a different color.. Minimum order for is 12 items. **CLICK ON THE PICTURE FOR MORE INFORMATION.** Please e-mail me your interest ASAP at Roger Crooks - racrooks@comcast.net.

Denim Shirt



\$30.00 – \$2 extra over XL

- **Ladies version available**
- **Light or dark blue colors**
- 7.5-ounce, 100% cotton
- Button-down collar, chest pocket
- Adjustable cuffs with buttoned placket
- Preshrunk

Cotton Long Sleeve Signature Twill



\$30.00 – \$3 extra over XL

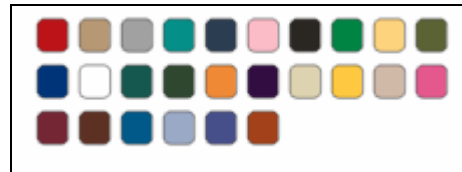
- Hunter Green (other colors available)
- 100% Cotton - 6.5 Ounce Colorfast twill
- Washed, preshrunk for extra comfort
- Button down collar / Double back yoke
- 2 side back pleats / Patch Pocket
- Adjustable cuffs
- Sizes XS-8XL (Classic Fit)
- Talls LT-3XLT (In Select Colors)

Mock Turtleneck



\$18.00 – \$2 extra over XL

- **Colors available**
 - 5.5 oz., 100% cotton jersey knit
 - Spandex reinforced rib knit collar and cuffs.
 - Double-needle bottom hem.
- *NOTE: Grey Heather is 90/10



Two-Tone Brushed Twill Cap with Suede Visor



\$16.00

- Structured, mid-profile
- 100% cotton brushed twill, suede
- Suede adjustable slide closure with buckle and grommet

Fleece Vest



\$30.00 - \$2 extra over XL

- **Ladies version available**
- **Colors available**
- 13-ounce, 100% filament polyester fleece
- Twill-taped neck
- Lycra-trimmed armholes and hem
- Side zippered pockets

T-Shirt w/Maroon Trim



\$9.00 - \$2 extra over XL

- 6.1-ounce, 100% cotton
- Double-needle hem

Turning Times

Reebok Performer Jacket



\$30.00 - \$4 extra over XL

- 100% Polyester; 2.9oz.
- Wind and Water resistant
- Color blocked and contrast stripes
- Machine Washable
- Sizes: Small to 5XL
- Royal Blue, Navy, Red, Black, Forest Green

Sizing Chart

- **CHEST:** Measure just under the arms, across fullest part of chest and around shoulder blades
- **SLEEVE:** With arm relaxed at side and slightly bent, measure from center back neck down to the outer wrist.
- **UNISEX:** Men's medium is similar to ladies' large. Sleeve length will be about 1-1½" longer. Body of garment is not form fitting. Unisex medium is equivalent to men's medium through chest and sleeve length.

MEN'S GARMENT	XS	S	M	L	XL	XXL	3X	4X	5X
To fit Body Measurements:									
• Neck/Collar Size	13.5" - 14"	14.5" - 15"	15.5" - 16"	16.5" - 17"	17.5" - 18"	18.5" - 19"	19.5" - 20"	20.5" - 21"	21.5" - 22"
• Chest	33" - 36"	37" - 40"	40" - 43"	43" - 46"	46" - 49"	49" - 52"	52" - 55"	55" - 58"	58" - 61"
• Waist							44" - 47"	58"	61"
LADIES' GARMENT	XS	S	M	L	XL	XXL	3X		
Equivalent Ladies' Sizes	2-	6-	10-12	14-16	1	2	22		
To fit Body Measurements:									
• Chest	32" - 34"	34" - 36"	36" - 38"	38" - 41"	41" - 44"	44" - 47"	47" - 50"	38" - 41"	
• Waist	23" - 25"	25" - 27"	27" - 29"	29" - 32"	32" - 35"	35" - 38"	48" - 51"		
• Hip	25"	27"	29"	32"	35"	38"	35" -		

Men's Vest Sizing Chart

SIZE CHART										
	XS	S	M	L	XL	2XL	3XL	4XL	5XL	6XL
Chest Size (inches)	32-34	35-37	38-40	41-43	44-46	47-49	50-53	54-57	58-60	61-63