

Turning Times

THE OFFICIAL NEWSLETTER OF THE CASCADE WOODTURNERS

January 2013

Please make sure that all content for the next newsletter reaches me by the 5th of February! turningwood@bendbroadband.com Thanks!

**NEXT MEETING: 6:45PM, THURSDAY, JAN 17th AT FRANKLIN HIGH SCHOOL
5405 SE Woodward St, Portland, OR**

BOB TUCK'S PASSING

Long time woodturner and friend to many of us, Bob Tuck passed away in his home Sunday morning. I know most of us will greet this news with sadness and with joy... sadness because we will miss him and joy because he has completed this sojourn with dignity and grace. Bob had just a couple of weeks earlier celebrated his 87th birthday with a crab dinner and Champagne.

He was a WW II Navy veteran and had every right to be proud of his service to our Country. Bob was a founding member of both Cascade and Northwest Woodturners. For years he conducted demonstrations at Woodcrafters, in Portland, and taught classes at Woodcraft Supply in Tigard. Bob knew just about every big name woodturner in the country and had given a few of them their start in the trade. He helped many of us in the Portland area get our start in this hobby.

Before coming to Portland, Bob lived at the coast in Bandon, Oregon where he owned and operated a Myrtle Wood Factory making salad bowls and other wood items for sale to the tourist trade.

Bob was a long time fixture at the Art in the Pearl Show and for many years served on their Board of Directors. For decades Bob was a participant at just about every Craft Show in the Northwest.

He was willing to lend a hand in teaching, advising or even a little constructive criticism if you asked. In the last few months he got a chance to see many of his long time friends again, and for that he was grateful. He was more than a good woodturner, he was a great human being and for those of us who got to spend a little time with him, we are grateful.

Bob can rest now and know that this world is a better place for what he gave.

PRESIDENTS MESSAGE

HAPPY NEW YEAR!! Well another year has slipped by. The board members hope 2013 brings the best to each and every one of you. We will try to do our part. We are excited about this year's presenters. We have Ashley Harwood coming in March to show us how to get the most out of our bowl gouges. By improving our technique we will have consistently better bowls. Then for the unique bowl lovers and segmenters of the club, we have John Beaver coming in April to show us how to make a "wave bowl". The year and presenters just get better from there. Mark your calendar for our bi-annual picnic to be held on July 27 at the Lapp Estate. Also mark your calendar for our meeting change in May. Due to the Utah Wood Symposium 16-18 May, our meeting will be held on the *FOURTH* Thursday, May 23.

Our meetings will begin at 6:45 PM. This will give us maximum time for our presenters. We hope to give them at least 90 minutes. Now your part is to read the newsletters. When updates are needed, I will be sending out "Last minute" announcements on Tuesday night, prior to our meetings. Last minute announcements need to be in my in-box by Monday night prior to the meeting. There will be few announcements made at our meetings, so we will need your help in reading the newsletter in order to pull this off so the whole membership stays informed.

Speaking of help, we are looking for someone to volunteer and lead our picnic in July and another person to chair our auction in October. You have plenty of time to pull it off and all of us on the board are ready to pitch in and help out. We just need someone to chair each event. Additionally, we also need a photographer for taking pictures each month. Taking an active part is enjoyable and those who feel timid about volunteering, there is lots of experienced help to get you going. We don't want to burn anybody out nor do we want to eliminate activities that have been very worthwhile in the past. Please, we need more folks involved. Please let me know if you can help.

Hope to see you at January's meeting.

Ken 360.687.9866
kenpegkirkman@gmail.com

DECISIONS BY THE BOARD

Show and Tell table: Each person bringing a piece of art work to show will receive a raffle ticket. The winner of this raffle will receive a \$10 Craft Supply gift certificate. The board has decided that we will not take time to discuss the pieces. It is important you identify your pieces so the members will have a chance to discuss your work with you. Let's try a 3x5 card with your name and particulars like type of wood, etc. Please bring your 3 x 5 card with you.

Challenge Table: A member of the club will discuss each piece and select one piece to receive a \$10 Craft Supply gift certificate.

All Day Demo/ Hands-on Work Shop:

- To change things up a bit, the all day demos will be held on the Friday's following our Thursday night meeting.
- The "hands-on" workshop will be held on Saturdays to give our working folks a chance to participate. If we need to have two back to back workshops, Saturday and Sunday, due to the demand, we hope our presenters will work with us. Let the board members know what you think of this change.
- The board also felt that a \$20 deposit would now be required at the time of sign up. Further it was decided that anyone not canceling 48 hours prior to their enrolled workshop and/or not showing up would be responsible for their full cost of the workshop tuition. Ken Kirkman will be responsible for registrations & cancellations so please call if you need to cancel (360.687.9866).
- We have decided if more folks sign up for the workshop than we are able to accommodate, we will hold a lottery. We are trying to make this more equitable for all of our members.

VP'S SOAPBOX

Hello and welcome to 2013. I would like to take a moment of your time and introduce myself. My name is Peter Morrell, but I go by Pete. I have been turning for about 6 years and a member of Cascade for 4. Since my skills are still those of a beginner, I truly appreciate the openness that the various members have shown to me in discussing things turning and the help that they have given to learn better how to do things.

Last year I set up the storehouse at each meeting. This year I will be working at scheduling the demonstrators and classes for 2014. If you have seen a memorable demonstration, let me know and I will investigate if we can include that turner in next year's program.

I am looking forward to the opportunity to give back to you and the club.

Sincerely, Pete Morrell
503-267-4730
luvbermuda@aol.com

DALE'S CORNER

We'll have open shop on Saturday January 26th. It will open at about 9:30am. Dress warm because there is some heat in my shop. But the important word there is *some*. For new turners, bring your tools and an idea and we'll get you started turning.

Bob Tuck recently expressed how much he appreciated both Cascade and Northwest Woodturners helping him with his equipment, tools and wood sale. He really enjoyed getting these things sorted and talking to so many friends, bout old and new.

Dale
woodbowl@frontier.com

TREASURER'S REMINDER

It's renew your membership time. It went well last year, so let's follow a similar procedure this year.

January means it's time for me to collect membership dues for 2013. Here's the procedure. Dues are \$25 for one person, \$35 for a family membership and a business.

1. Determine the amount of dues you owe.
2. Bring cash or a check and a pen.
3. Get an envelope from me at the January meeting: it has an application and membership card in it.
4. Fill out ALL the blanks on the form, even if nothing has changed. There are errors in my master list and this is the only way I can correct them. Please print clearly. We get too many email addresses with a "1" instead of an "i", or a "0" instead of an "o".
5. Put the completed application and payment back into the envelope.
6. Tuck the tab in into the envelope. No need to seal it or write your name on it. The tucked tab will keep the papers inside.
7. Put the envelope into the plastic tub or hand it to me.
8. Put your name on the membership card, which goes in your wallet. Enjoy the 10% discount offered by our advertising businesses.
9. Enjoy the meeting.

Howard Borer, Treasurer

CASCADE MEMBERSHIP ADVANTAGES

- ❖ Use of the bounteous club library is for club members. Your current membership card or listing on the Cascade Members roster shall be presented before any reference material, library book, Woodturning magazine or CD is checked out.
- ❖ Discounts at local supporting merchants with the showing of your card. See the list of participating businesses at the end of the newsletter.
- ❖ Group order discounts from Craft Supply and other special purchases.
- ❖ Free (???) Wood when members share the location of newly downed trees.
- ❖ Fellowship with the most caring and sharing hobbyist around.

JANUARY'S MEETING

January's meeting will welcome our own Keith Strauss as presenter. He will show us how to make a wooden bracelet. Our meeting will start at 6:45 PM. The demonstration will run from 7 PM - 7:30 PM. Following that a "Tool Swap" will occur from 7:30 PM until 8:45 PM. You may come early and set up but we ask you not to start swapping tools until after Keith's demo. There is no structure to speak of for this event. Each person desiring to swap tools will set up around the room at the different tables.

MEETING SCHEDULE 2013

DATE	DEMONSTRATOR	CHALLENGE
JAN 17	Keith Strauss – Wooden Bracelets	Tool Swap – No Challenge
FEB 21	Steve Newberry – Hook Tool	Wearable Turning or Hook Tool
MAR 21	Ashley Harwood – Bowl Gouge	Turned Egg
APR 18	John Beaver – Wave Bowl	Bowl w/Ashley's Technique
MAY 23	<i>Note Date Change TBAL</i>	Wave Bowl
JUN 20	Joe Wagner - Ornament	
JUL 27	<i>Note Date Change</i> Picnic @ Phill Lapp's	Bird House Ornament
AUG 15	Jimmy Clewes	A Plate
SEP 19	Ron Gerton – Turning Enhancement	Something turned fast
OCT 20	Auction	No Challenge
NOV 17	<i>TBAL</i>	Christmas Ornaments

Note some open spaces for our local turners to demonstrate

MONTHLY CHALLENGE

Because of the Tool Swap, there will be no January challenge. Start looking around your wood pile for suitable material to make a bracelet or other wearable turning for February.

NOVEMBER MEETING

Three presentations were made showing how to make angels ornaments by Jerry Klug, ornament finials by Stan Postma and ornament globes and humming birds by Kathleen Duncan.



There were over two dozen ornaments in the challenge and Gary awarded four turners for their work with gift certificates, Phill Lapp, Bill Giffen, Alan Straton and Gary Dahrens.



Phil Lapp's drilled globes



Gary Dahrens' multi position turned ornament



Bill Giffen's birdhouse and snowmen ornaments

BIRTH OF A CLUB

Rick Rich is looking for some help in starting the Lewisville Area Woodturners Club in Battle Ground. He has written a draft set of by-laws and hopes to charter a new AAW Club in 2013. He is looking for folks from our club who live on the Washington side to volunteer to help get the club started. Specifically, he is looking for folks to volunteer for club president, VP, etc. He is currently looking for a meeting place in Battle Ground and hopes initially to hold quarterly meetings the day before the Cascade meeting. In this way, the club could take advantage of the Cascade demonstrators. If all goes well he hopes to hold the first meeting sometime in March or April. If you are interested, look him up at the meeting or call him at [360-686-0529](tel:360-686-0529).

BARGAIN BIN

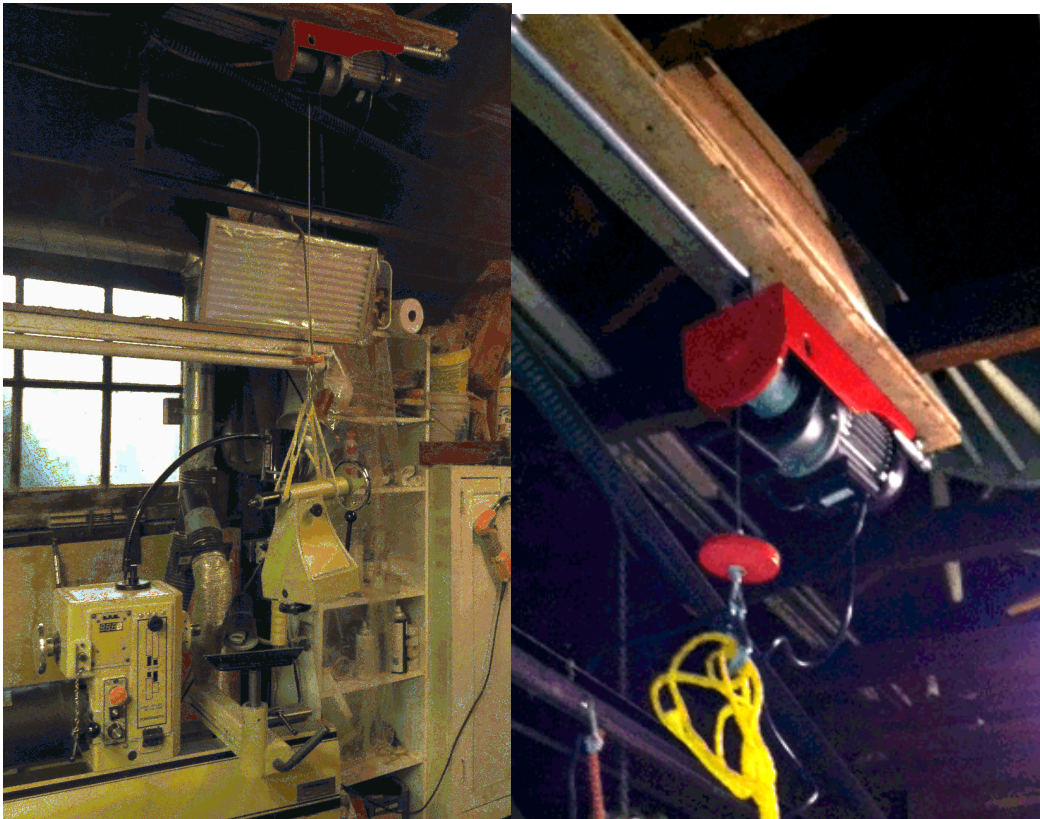
Many of us are in the condition that requires lifting limitations. Those who are still able to bench press at the gym like an exhibitionist could pay attention also. A brief moment lifting without proper stance will put you in the first group with the rest of us. Here is my solution to removing the tail stock from the Powermatic lathe. I had wanted to get a Robust "Swing Away" to get the tailstock out of the way for hollowing and working off the end of the bed. Unfortunately, Robust did not have sufficient orders to keep the Powermatic accessory in production. Other tail stock movers were not available when I needed one and the prices were imitating an Atlas booster rocket.

I came up with a solution that eliminates back strain lifting the 57 lb tailstock, doubles to assist mounting heavy logs onto the spindle and is cost conscious. Purchasing an electric hoist from Harbor Freight and mounting it on a pipe above the lathe solved the problem. Now it is just a push of a button to lift the tailstock and a push to slide it out of the way. No sweat, no strain and I have another tool/toy to enjoy.

Skip Burke

(503) 233-4263

drgramp@comcast.net



COMING ATTRACTIONS

Cascade Woodturners:

March 21st: Ashley Harwood, Mar 22nd all day demo, Mar 23rd hands on class

Northwest Woodturners:

March: Ashley Harwood

Willamette Woodturners:

January 10th demo: Ron Fox – Penturning

February 14th demo: Nick Skaggs - Bowlturning

Gathering of the Guilds; One of Portland's premier art events will be April 26, 27, and 28, at the Portland Convention Center. Woodworking, woodturning, pottery, weaving, metal arts, glass, and bead making will all be represented. It is

Cascade's intention to share a 10 by 10 booth with Northwest Woodturners The cost of the booth will be shared by the club treasuries, and will be free to whoever would like to display their work. However, you will be expected to put in some of your time to man the both. We will need to have a least one person in the both at all times during the show. We will have a sign up sheet at our January meeting. So please check your calendars for which days and times you could be there. You will be allowed to sell your work to the public, and there will be literally thousands of people walking past the booth. It is your job to get them to stop and buy something. It should be fun; so get to turning with this show in mind. Any questions please direct to GarySundquist@gmail.com or [503-645-2231](tel:503-645-2231).



John Beaver "Wave Bowl"



Ashley Harwood bowl

DEMOS - CLASSES – SEMINARS

Rockler Woodworking 503-672-7266, www.rockler.com

- Robert Sorby All Day Turning Tool demo, Feb 18th, 1:00-8:00 PM

Woodcraft 503-684-1428, www.woodcraft.com

- Pen Turning Demo, Jan 12th 1:00-2:00
- Easy Wood Turning Tools Demo, Jan 19th 1:00-2:00
- Pen Turning (\$40) by Emile Rivera, Jan 26th 1:00-4:00
- Basic Bowl Turning (\$115) by Paul Rasmussen, Jan 27th 10:00-4:00
- Beginning Lathe Turning (\$115) by Paul Rasmussen, Feb 2nd 10:00-4:00
- Turn a Perfume Applicator (\$40) by Mike Shea, Feb 7th 2:00-5:00
- Pen Turning Demo, Feb 9th 1:00-2:00
- Turn a Perfume Applicator (\$40) by Mike Shea, Feb 11th 1:00-4:00
- Pen Turning (\$40) by Allison Geary, Feb 13th 1:00-4:00
- Pen Turning (\$40) by Mike Shea, Feb 23rd 10:00-1:00
- Beginning Lathe Turning (\$115) by Paul Rasmussen, Mar 2nd 10:00-4:00

Woodcrafters 503-231-0226, 212 NE 6th Ave, Portland, www.woodcrafters.us

- Poest will turn a very large platter, Jan 12th, 10:00-3:00
- Poest will turn a very large hollow form, Feb 2nd, 10:00-3:00

SYMPOSIUM SCHEDULE

There is something planned for every month that may match your travel plans:

- Tennessee Association of Woodturners 25th Annual Symposium, Franklin, TN January 25-26, 2013
- Alaska Woodturners Association Woodturning Symposium, Anchorage, AK January 26-27, 2013
- Desert Woodturning Roundup, Mesa, AZ February 22-24, 2013
- Totally Turning 2013, Saratoga Springs, NY March 23-24, 2013
- Southern States XIII Woodturning Symposium, Cartersville GA Apr 26-28, 2013
- Utah Woodturning Symposium, Orem UT May 16-18, 2013
- AAW Symposium, Tampa, FL June 28-30, 2013
- Woodturners of Olympia Symposium, Olympia WA July, 2013
- SWATurners Symposium, Waco, TX August, 2013
- Rocky Mountain Woodturning Symposium, Loveland, CO September, 2013
- Ohio Valley Woodturners Guild, West Harrison, IN October 11-13, 2013
- Wisconsin Woodturners Expo, Eau Claire, WI November, 2013

If you hear of an interesting symposium, e-mail me to add it to the list. Jerry Klug

COMPANY STORE

If a number of members want a certain item, and we could be low on it. Please contact Eric G. von Beck at 503-320-5397 or evonbeck@gmail.com a week ahead of the meeting so he could verify it is not out of stock and set it aside for you.

Anchor Seal has increased their prices so the next shipment may show a rise in price. Retail price at some locations is \$20/gal. We plan to purchase a 55 gal drum to keep the costs down. The problem is storing that much end seal. We have to have process the stock into gallon jugs when it arrives and distribute it to the members quickly.

Company Store Item	Price
Accelerator (for Cyanoacrylate adhesives/CA), sprayer, 8 oz	\$6.75 each
Anchor Seal, one gallon	\$12.50 each
Cyanoacrylate adhesives (CA) - Thin, Medium and Thick, 2oz bottles	\$5.75 each bottle
Sandpaper, Aluminum oxide with heavy cotton cloth backing in 80, 100, 120, 180, 220, 320 & 400 grits	\$1.00 each sheet
Walnut Oil - filtered, 16 oz	\$4.00 each

Eric is in need of gallon jugs for the Anchor Seal. No milk jugs as they are not sturdy enough.

QUICK LINKS:

There is a listing of web links used by club members in the "Resources" section of the web site <http://www.cascadewoodturners.com/resources.htm> . If you have a favorite or new site that would be useful to club members, e-mail it to me to include it with the list. turningwood@bendbroadband.com

CWT MENTORS

Cascade Wood Turners has a mentoring program and the member turners providing assistance are listed in the "Resources" section of the web page <http://www.cascadewoodturners.com/resources.htm>. These members are available for you to contact if you need help in different areas of woodturning. If you would like to be a mentor yourself and be contacted with woodturning related questions e-mail me at turningwood@bendbroadband.com and I will add you to the list!

CLASSIFIEDS

To place or continue an ad, contact Jerry Klug at turningwood@bendbroadband.com. We will run ads in the next newsletter after receiving your ad. Let us know if you want your ad continued more than one month.

FOR SALE: A neighborhood friend of Jerry Harris gave this lathe to Cascade. It is a Craftsman with a 5" throw, (can theoretically turn 10") and no motor. Jerry will bring it to the January meeting.



Want some wood: Randy Less has a Maple Tree with what looks like fiddleback and birds eye maple in it. He would like to sell the "tree/log" to an interested party. If you are interested, you may call him at [360-852-2317](tel:360-852-2317).

FOR SALE: Cheap beginner's lathe for sale. 4-speed Rockwell lathe: 10" swing over bed, 14" swing over gap in the bed, at least 36" between centers, motor needs to be rewired, sheet metal stand with solid sides, 8 Leichtung high carbon tools (no high speed tools), no live center in the tail stock but there's also a ton of dry hardwoods: it looks like the guy did a lot of flat work also.

Mrs. Darlene Daniel 503.706.2296 She lives in Troutdale

FOR SALE: Dayton heavy duty electric motor, 1HP, 220V, unused and half new price at \$140.
Jerry Klug (541) 550-6299 turningwood@bendbroadband.com

VERRY FUNNY APPLE VIDEO

<http://www.snotr.com/video/8965/>

CASCADE WOODTURNERS OFFICERS AND CONTACTS

President	Ken Kirkman	(360) 687-9866	kenpegkirkman@gmail.com
Vice President	Peter Morrell	(503) 267-4730	luvbermuda@aol.com
Treasurer	Howard Borer	(503) 658-3409	howardborer@yahoo.com
Secretary	Skip Burke	(503) 233-4263	drgramp@comcast.net
Member at large	Keith Strauss	(503) 659-7830	strauss.k@comcast.net
Video Librarian	Dawn McClard	(503) 255-3940	grrtshearwater@gmail.com
Book Librarian	Mike Worthington	(503) 640-0373	mikedw47@comcast.net
Company Storekeeper	Eric G. von Beck	(503) 320-5397	evonbeck@gmail.com
Newsletter Editor	Jerry Klug	(541)550-6299	turningwood@bendbroadband.com

CASCADE WOODTURNERS SPONSORS

Support of the sponsors listed helps maintain our hobby supplies. Remember that your current membership card is good for discounts at these firms. For additional information see the website <http://www.cascadewoodturners.com/sponsors.htm> .

Gilmer Wood Company

Rockler Woodworking & Hardware

Woodcrafters

KLINGSPOR Abrasives, Inc.

Woodcraft Supply

Carbide Saw

Would you like to be on the "MENTOR" list on the web site? You could be a resource for newer turners. Contact a Board member to be added and list your areas you prefer to help with.