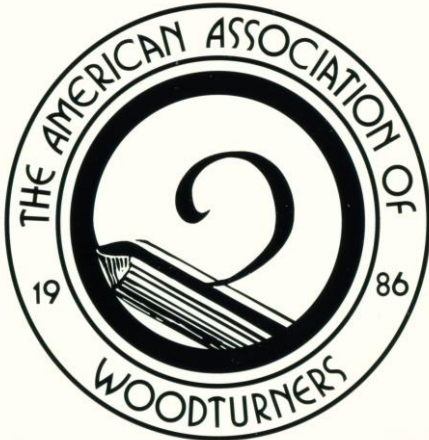


# Turning Times

THE OFFICIAL NEWSLETTER OF THE CASCADE WOODTURNERS



**MARCH 2021**

**Please make sure that all content for the next newsletter reaches me by the 31<sup>st</sup> of March! [turningwood@bendbroadband.com](mailto:turningwood@bendbroadband.com) Thanks!**

**NEXT MEETING: 6:00PM, THURSDAY, March 18<sup>th</sup> VIA NEW TECHNOLOGY**

## Presidents Message

President's Message: March, 2021

Happy March!

I hope you enjoyed the February demonstration with Kai Muenzer turning his Touchless Turned Lamp. We are planning a Challenge Project for the Touchless Turned Lamp – with a due date of our April 15<sup>th</sup> meeting. Check out the link on the Cascade website, if you missed Kai Muenzer or if you want to review it again.

Watch for other newsletter articles and/or emails with more information about this challenge project – including the electronics for the project.

This month we have Carol Hall demonstrating something different and interesting. Carol's presentation 'Beyond Round and Brown' should be a very entertaining and exciting journey into artistic embellishment. Carol has some of the most fantastic art

decoration on her pieces and she will show us how she does this great work. You can see some of Carol's work here: <http://www.thecarolhall.com/gallery-2/>

Thursday, March 18th is our next meeting, so please be sure to attend. We will have our usual show and tell, so please provide your photos to Harvey or me for sharing. We will start the meeting at 6:00 PM, have our usual business, followed by show and tell, then be ready for Carol Hall to start around 6:30 PM.

In May, we will have Keith Gotschall demonstrating his Ivory and Blackwood bowl. This should again be an amazing demonstration. More about Keith in the near future.

Cascade Woodturners likes to have a mix of professional demonstrators and we like to showcase some of our local turning talent from CWT and nearby clubs. Please let me know if you would like to demonstrate a skill or project at one of our online meetings in 2021.

I look forward to seeing each of you via Zoom on Thursday, March 18<sup>th</sup> at 6:00 PM, via Zoom.

Thanks,

Gary Borders  
President, Cascade Woodturners  
[gbborders@comcast.net](mailto:gbborders@comcast.net)

### **RoboHippy Tool Rest Drawing and Sale**

Reed Gray, aka RoboHippy has donated several tool rests to the woodturning clubs in the Portland / Vancouver area. Cascade was the recipient of six tool rests – three with a 1” post and three with a 30mm (Vicmarc) post. We will sell these tool rests to our members, but we anticipate there will be more buyers than we have tool rests. So, we are going to have a drawing for all interested buyers. The drawing will take place during the March 18<sup>th</sup> Cascade meeting. Winners from the drawing can purchase one of the tool rests. There will be six drawings, one for each of the tool rests.

Please send an email to Gary Borders – [gbborders@comcast.net](mailto:gbborders@comcast.net) – to be entered into a drawing. Please let me know which tool rests you want and you will be entered into between one and six drawings. If you don't have a Vicmarc lathe, you probably only want to enter the drawings for 1” post tool rests.

Pricing – The larger tool rests will be \$50 and the medium size will be \$40. There is a 14” and an 11” tool rest for the Vicmarc and an 11” tool rest with a 1” post – these will all be \$50. There is one 8 ½” tool rest for the Vicmarc and two 8 ½” tool rests with a 1” post – these will all be \$40.

## **Touchless Turned Lamp Challenge for the April 15<sup>th</sup> Cascade Meeting**

We are planning to hold a challenge project for Kai Muenzer's Touchless Turned Lamp. Kai will join our meeting for a few minutes to witness the Show & Tell portion of the April meeting. This challenge isn't really a contest, but each entry will receive a \$10 gift certificate to Craft Supplies. The lamp doesn't have to be fully operational to get the gift certificate, but you should complete the turning.

Kai's project had a light circuit made of individual components including an LED strip, motion sensor, battery holder, wiring, resistors and batteries. If you need help sourcing those components, please contact Gary or Harvey via email and we can help find those parts. Estimated cost is around \$30 for the 'kit' of parts. See Kai Muenzer's site or contact Harvey Rogers for this component list. <https://kaimuenzer.com/>

Another alternative is to use parts sourced via Amazon. These components require that the lamp be plugged into the wall, but they are easier to assemble. These parts won't fit through the turned post, so you might have to attach the wires to the back of the stand. You could possibly cut one of the USB cables and fit it though the post, but then you would have to solder the wires back together. The three parts are, a motion activated sensor, a color LED strip with remote control, and a USB plug-in charger. Estimated cost is under \$35.

### **The Amazon parts can be found at the following links:**

Motion Activated Mini Body PIR Sensor Switch with USB Interface Cable

[https://smile.amazon.com/gp/product/B083HHH2XD/ref=ppx\\_yo\\_dt\\_b\\_asin\\_title\\_o07\\_s00?ie=UTF8&psc=1](https://smile.amazon.com/gp/product/B083HHH2XD/ref=ppx_yo_dt_b_asin_title_o07_s00?ie=UTF8&psc=1)

Multi-Colour LED Light Strip Kit

[https://smile.amazon.com/gp/product/B075VSJTR9/ref=ppx\\_yo\\_dt\\_b\\_asin\\_title\\_o08\\_s00?ie=UTF8&psc=1](https://smile.amazon.com/gp/product/B075VSJTR9/ref=ppx_yo_dt_b_asin_title_o08_s00?ie=UTF8&psc=1)

USB MultiPort Charging Block, Wall Plug Station

[https://smile.amazon.com/MultiPort-Charging-Station-Charger-Replacement/dp/B07GQSY4N8/ref=psdc\\_2407761011\\_t5\\_B07C2QG8BB](https://smile.amazon.com/MultiPort-Charging-Station-Charger-Replacement/dp/B07GQSY4N8/ref=psdc_2407761011_t5_B07C2QG8BB)

## **MEMBERSHIP CARDS**

If you would like a club card showing you have paid 2021 club dues, please email Ken Kirkman with your post office mailing address. These cards can be used for discounts when purchasing products from our sponsors. Sponsors are identified at the end of our monthly newsletter.

## DALE'S CORNER

*Regular monthly Open shop sessions at Dale Larson's shop have been cancelled.* With health officials recommending crowds from not gathering, it seems sensible to not pack 20 people into one shop. With that said, if any member wants help with chain sawing wood, band sawing wood, sharpening tools or some question about turning, please feel free to call me and we will set a time for you to come over to the shop. One on one is simply more relaxed and safer at this time.

I received a call from Bob Espen's wife. Bob passed away Feb 22, 2021 from a massive stroke. Bob was a long time member of Cascade Woodturners and was very well connected to the world wide community of woodturners. He was a good demonstrator and a great ambassador for the woodturning community. He was a very innovative woodturner.

He served in the Navy, lived in Hawaii, then Alaska and moved to Winlock/Toledo Washington about 15 years ago. He was involved in harvesting figured woods for the music industry. He will be buried in Willamette National Cemetery.

Bob was just a really nice guy and very generous to everyone. Bob will be missed.

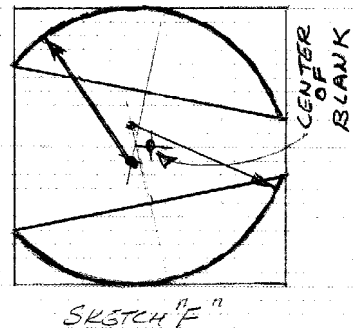
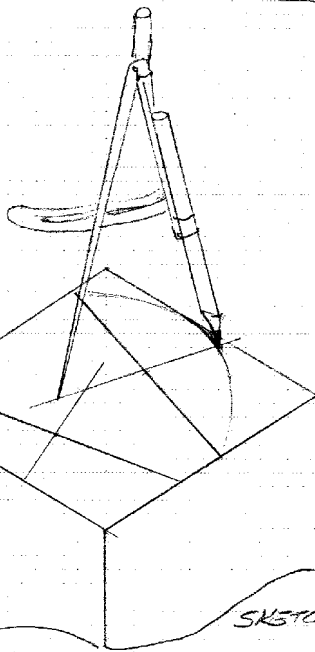
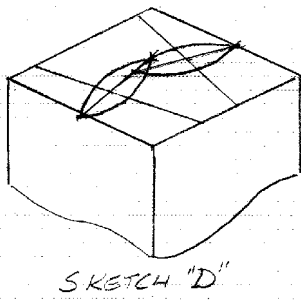
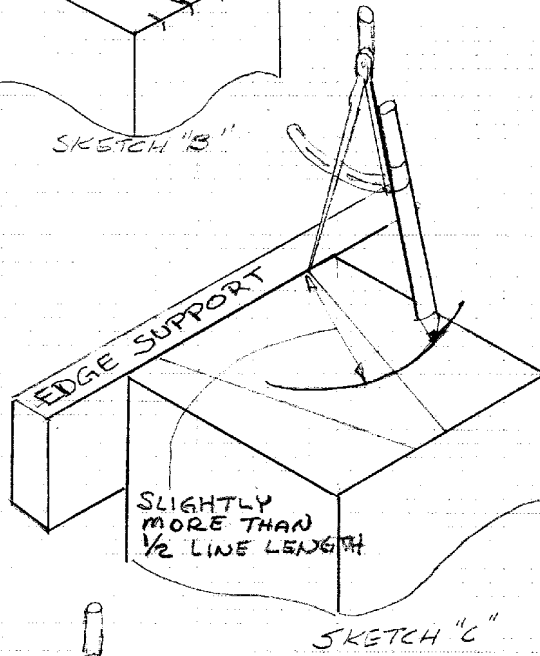
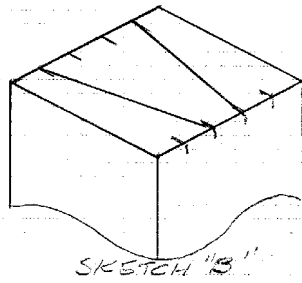
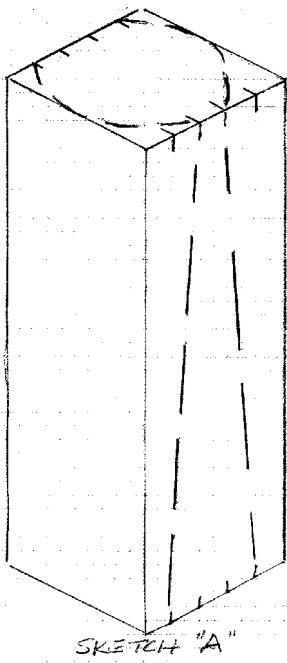
## AUGUST 2012 DEMO



Bob Espen turns a box with a twist. His twisted boxes can take more than a dozen different chucking steps. The box Bob demonstrated only requires seven. It is a straight sided box with two off center curved sides. There were a lot of questions on laying out the centers so I turned a box to be sure I had the process correct. Here are the steps I followed so you can turn one for the Challenge.

1. Start with a square blank and not too small of a one (more on that later). Mark the top edges that are opposite of each other with an odd number of spaces. Odd numbered spacing is commonly found in nature and is more pleasing to the eye. The number is up to you but five spaces is a good starting place. Repeat the marking on the bottom with the marks in line with the top marks. (Sketch "A")
2. Draw two lines across the top connecting two of the marks. For your first one, it is much clearer if you keep the lines so that they mirror each other from the center line of the blank. You can use any set of marks and even cross the lines but your box design may get a bit complicated. For my first attempt, I kept it simple and followed the example Bob showed in his demo using five spaces and the lines splayed from the center. (Sketch "B")

3. The next step is to draw the lines on the bottom. The only trick is to have the spacing between the lines be opposite from the pattern on the top. The side with the narrow gap on the top must have the wide gap on the bottom.
4. Now the geometry begins. The lines, all four of them, require a perpendicular bisector. Use a drafting compass set slightly larger than half the line length of the line and draw an arc from the end of the line. Since it is difficult to set the compass pivot point at the edge of the wood, either clamp, glue or tape a scrap wood support block to the blank, flush with the top of the wood. This supports the compass point when you draw the arcs. (Sketch "C") Now draw the arc from the other end of the same line, without changing the compass setting. Where the two arcs cross draw a line through the arc crossings. This is not only the half point of the line but it is perpendicular (square) to the line. Do this on all four lines. If you are doing a design like Bob demonstrated it only takes one compass setting for all eight arcs. (Sketch "D")
5. This step is trial and error time. You set the compass point on the bisector line you just established and check if the arc the compass is set to intersect both ends of the line you bisected and the edge of the blank. If not, adjust the compass and try again. When the compass touches those three points, this is the turning center of that side. (Sketch "E") I use an awl to establish the turning center and draw a line to the arc to be cut so I can tell one turning center from the others. Now repeat the process on the remaining three bisector lines. (Sketch "F")
6. Start the box layout by finding the blank center. You now have three centers on each end of the blank and if you are making a small box, you have just noticed that they are awfully close together. This is where a typical 60° live center can give problems by making a center point depression that will crowd the nearby offset centers. Using a cup center with a short center point will assist in keeping the center locations useable.
7. Now you make the box. Turn the tenon on each end if you use a scroll chuck. You can grip the blank in the chuck leaving it square but I like to have the box concentric with the center points for finishing the top and bottom. Bob had the box inside already turned. I waited until after the layout to turn the box internals as I need to have the layout to see how the side curves affect the wall thickness. Cut the top and bottom where you want the design shape to be and hollow the box as you usually would. The fit on the box joint tenon must be snug. You should hot melt glue the lid to the bottom to assure the pieces do not rotate when turning the outside.
8. Turning the outside is almost normal spindle turning but you must be sure to have the piece on the centers that match the outside cuts. That is why I draw that radius line from the centers to the arc. This is intermittent cutting so be sure to check the piece clears the tool rest and you keep all your digits behind the tool rest. Use a SHARP spindle gouge, light cuts and as much speed as you are comfortable with. You may have to go back and forth between the offset centers to get the cuts balanced and the flat sides with a straight line at the edge of the curved side cuts.
9. Finish the ends using a jamb chuck and detail as you please. If you normally add beads or groove lines at the box joint, you will have to do this by hand. When the curved sides are turned on the off set centers, the joint is not in plane with the cutting tool. When the blank is on center line for turning the box details, the flat sides are inside the radius of the curved sides.







The box in the center is similar to the demo box. The one on the left is turned with four curved sides set at a 15° angle. This box that required well over a dozen chuck mounting positions. The small grooves on the side are angled slightly downward. There are similar grooves inside that are parallel to the base so that a lattice is viewed through the box.



These large pieces are more examples of Bob Espen's skill and design talent.

**AAW NEWS**

**AAW** | **AMERICAN ASSOCIATION  
OF WOODTURNERS**

AAW leadership has been closely monitoring the status of Covid-19 in preparation for our 35th Annual International Symposium, July 15-18, in Omaha, NE. Above all else, our concern continues to be the health and safety of our members, demonstrators, trade show vendors, partners, and other event attendees.

At its February meeting, the AAW Board of Directors unanimously made the essential decision to cancel the in-person 2021 AAW Symposium in Omaha. Based on research, risk assessment, and adherence to CDC guidelines, the Board has determined that holding a safe, high-quality, in-person event in July is not possible.

While we expected the Covid-19 pandemic to recede by July 2021, too many uncertain variables remain, including vaccine distribution and efficacy, and evolving virus variants. The Board concluded that even when following CDC and local COVID-19 transmission precautions, we cannot guarantee safety for all involved given the large number of people assembling from around the country and the world.

While this is incredibly disappointing for all of us, we are moving ahead to create an improved AAW Virtual Symposium for 2021 and are actively planning our next in-person symposium for 2022. You can look forward to:

- AAW's 2021 Virtual Symposium, July 17-18, 2021, with front-row seats from home for your safety and comfort. We will be using an enhanced virtual event software platform to offer multiple concurrent live demonstration tracks (with access after the conference to all recordings), a virtual trade show, a virtual Instant Gallery, live and silent auctions, special interest topics, drawings, and more. The only thing missing will be the handshakes and hugs from old and new woodturning friends. You will need to wait one more year for that.
- An in-person AAW 36th Annual International Symposium, June 23-26, 2022, in Chattanooga, TN. This large, action-packed experience marks the celebrated comeback of AAW's Symposium after a two-year virus-related hiatus. There will be plenty of demonstrations and panel discussions, a jam-packed trade show with exhibitor booths, inspiring exhibitions and Instant Gallery, auctions of turned art, charitable initiatives, networking opportunities, and more. Mark your calendars!

Please know that that protecting the health and safety of our members is our single most important consideration. As we continue to address the challenges of Covid-19 and its impact, we thank you for your patience, understanding, flexibility, and support.

We offer our best wishes for health and safety to each of you and to those you care about.

Kind regards,  
Phil McDonald, Executive Director  
on behalf of the AAW Board of Directors and Staff



## Live Online Events

Your AAW is offering numerous on line demos each month for your participation and enjoyment. There were over a dozen scheduled this month alone. Check out the “Remote Demonstration Event Calendar” on your AAW web page <https://community.woodturner.org/events/ird-demonstrations?zs=U5Eib&zl=agET2> then click on “events”.

## SAFETY REMINDER

Our noble President Gary has declared a challenge for April: making a touchless turned lamp like Kai Muenzer demonstrated at the February meeting.



six inch disk fits into a six inch groove, so it needs to be sized pretty exactly.

I figured I would screw up at least a couple before I managed to turn and embellish one that looked halfway decent, so I decided to turn a couple for practice.

I had a poplar board that was about seven inches wide, so I cut a couple of roughly seven inch squares, put one between centers, used calipers to mark the approximate diameter, and started cutting the board with a bowl gouge.

The part of the lamp that lights up is the center disk, which is like a thin, shallow bowl that is six inches in diameter. The

That was unpleasant. Mostly I was turning air, with the corners whacking the gouge as they came around. Then I had an inspiration: If I used a parting tool aimed toward the headstock I could easily cut the disk to the required diameter at right angles to the surface of the disk, and the tool would always be in contact with the wood. Brilliant!

Of course I was very careful. I was turning at a reasonable speed, wearing a face shield and standing out of the line of fire. That's why I was not hurt when I heard the loud bang and the soft tinkle.

I thought cutting the disk out of the center of the blank would just leave a hole in the remainder of the board, which would remain intact and fall back harmlessly around the drive center.



I failed to realize that the edge of the disk was so close to the edge of the square blank that the wood there would easily break. So when the parting tool cut the outside loose, centrifugal force ripped the outer piece into four smaller pieces.

The loud bang came from the pieces flying around the shop and crashing into things, and the soft tinkle came from the shards of glass falling out of the window in front of my lathe.

Of course, that window is the lovely new window in my lovely new shop that I

meant to protect with wire mesh, but hadn't gotten around to yet. 😞

I would not have had the problem if I had used the gouge to nibble the corners off, or if I had simply sawed the corners off the blank before I put the blank on the lathe. In retrospect, my "brilliant" idea was terrible. The centrifugal force operating on a seven inch square of wood is too great to do anything that will cut big hunks off, because those big hunks can fly off, causing loud bangs and soft tinkles.

I think I learned from this experience, and plan to try very hard not to tinkle in my shop again.

Turn safely and joyfully!  
Harvey Rogers, Safety Officer

## Fallen Wood

Cascade member Steve Strawn had a large maple come down, partly on his house. He wrote Grand Poobah Gary Borders asking for information about turning the fallen wood into blanks that turners can use, noting that there is a lot of fallen wood in our area, and it would be useful for turners to know how they can properly salvage it. Gary contacted Dale Larson, who kindly provided a master turner's perspective and a very helpful diagram. Then Gary then asked me to summarize what members should know about using fallen wood. 😊

This summary is therefore divided into two parts: Harvey's beginner basics; and Dale's master turner advice.

## **Harvey's beginner basics:**

Woodturners generally prefer to turn hardwoods. Oregon has lots of wonderful maple, walnut, oak, madrone, myrtle, alder, fruitwoods and other nutwoods. Some ornamentals, like rhododendrons and dogwoods, have very dense, hard wood that is fun to turn. And some hardwoods have heartwood that is a different color than softwoods, making for interesting turning possibilities. Soft woods like fir, pine and hemlock can be turned, but tend to be less rewarding.

To give you the best chance to get some great turning blanks from fallen wood, I think you should choose fallen hardwood that looks interesting.

Fallen wood is likely to split. Splitting occurs when water evaporates from a log unevenly, causing the dryer parts to shrink so they don't fit well with the wetter parts. How fast fallen wood will split depends partly on the type of wood. I once heard Mike Meredith joke that some fruitwoods start to split while they are falling to the ground.

How fast fallen wood splits also depends on the temperature and humidity where the wood is kept. Fallen wood lying in the rain in the winter isn't likely to split as fast as fallen wood lying in the direct sunshine in the summer. But winter or summer, fallen wood that is left on the ground for a while is likely to split, and splits can make it unsuitable for turning.

Cutting the fallen wood up and storing it properly will reduce the likelihood it will split. Wood trunks and branches that are left "in the round" with the pith in the center are likely to develop splits running from the pith outward. So a good thing to do with fallen wood is to cut it into usable lengths and then slice it lengthwise down the center, getting rid of the pith. I find a "usable length" to be about one and a third times the diameter of the log. So if the log has a diameter of twelve inches, a usable length would be at least 16 inches. This allows you to turn a bowl the full diameter of the log, but still be able to slice the ends off the log to get rid of drying checks.

Once you cut the wood into usable lengths, split it and get rid of the pith, you need to store the wood so that it will lose its water very slowly and evenly. I coat the endgrain of my split logs with Anchorseal, which is a wax emulsion that prevents water from leaving the end grain quickly. The Cascade store sells Anchorseal. I then store the split lengths out of direct sunlight and in a cool place. A woodshed or unheated garage is ideal. Other turners use other techniques to keep the water from leaving the wood quickly.

Basically, to minimize splits you should cut and seal fallen wood as soon as you can. And you should expect that some of your wood will split anyway.

Here's a link to a Carl Jacobson YouTube video on preparing and drying green wood:  
<https://youtu.be/a4VmwzvGIdI>

If you know you will turn the fallen wood into bowls, you can turn the green wood into rough-turned bowls. Rough turned bowls are quite a bit thicker than typical finished bowls. The rough turning helps the water evaporate more evenly, which helps avoid splitting. But rough turned bowls need to be turned a second time after they are dry. Rough turning green wood bowls is great fun because green wood produces these lovely, long shavings that float through the air and cover you and most of your shop.



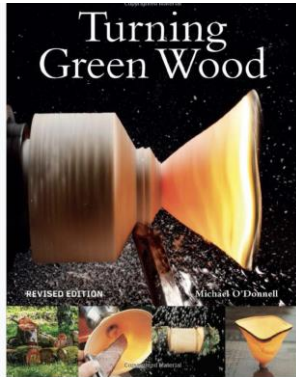
Here's a link to a Mike Peace YouTube video on rough turning a green wood bowl: <https://youtu.be/Jl5qbtOTpt8>

Cutting fallen wood is usually done with a chainsaw. Chainsaws are extremely dangerous if they are not used carefully. Please bone up on the right way to use your chainsaw *before* you start cutting.

### **Dale's Master Turner Advice:**

“The basic rule is to cut up the most valuable part of the tree first. Here is my order of value. First I cut up any burl, then I cut up any crotches, then I cut up starting as close to the stump as I can and work my way up the tree. Generally the limbs are firewood. The limb wood is full

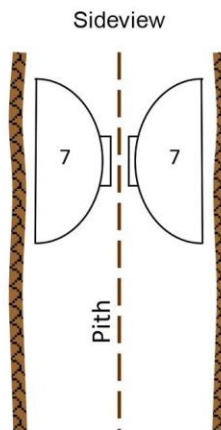
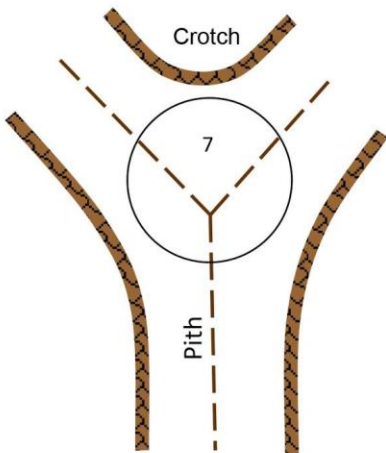
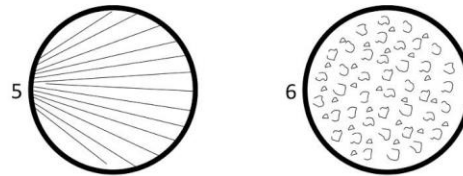
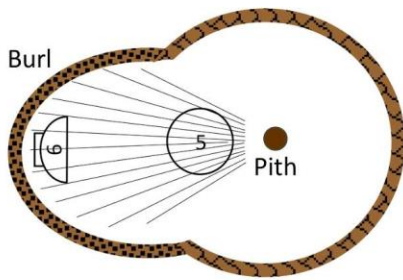
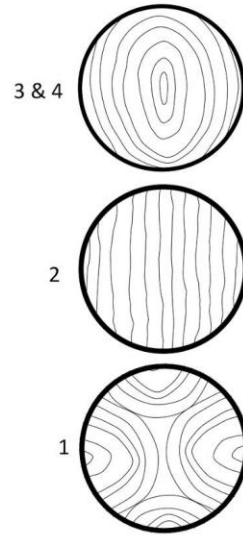
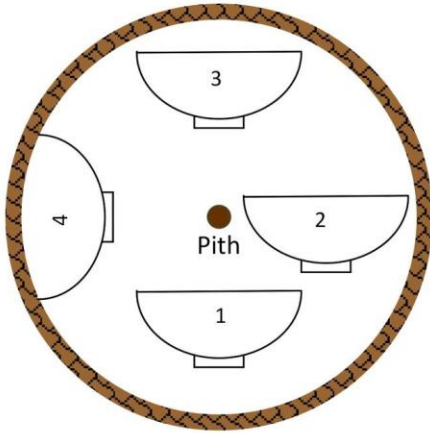
of stress and the grain is not generally good to turn.”



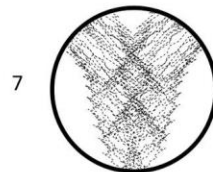
Dale recommends the book "Turning Green Wood" by Michael O'Donnell, which is available on Amazon

Dale then provided this excellent diagram, showing how the location of a bowl in a log determines the grain pattern in the bowl.

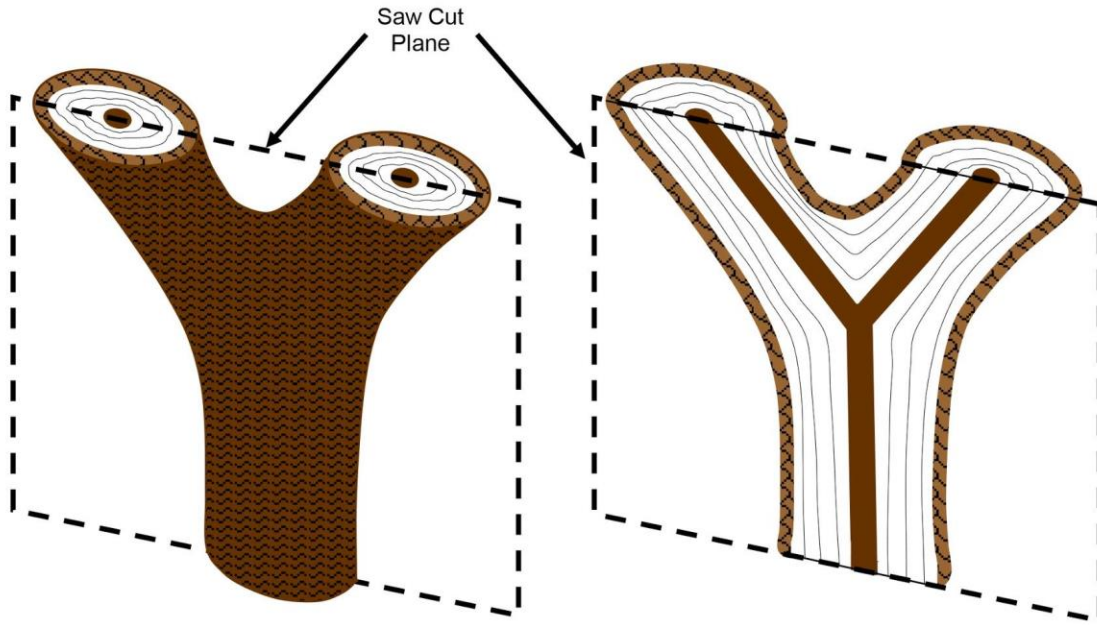
Cutting a Tree for Figure by Dale Larson



Feather Pattern







## LIBRARY NEWS

Hi Everyone,

We miss you! It's been too long since we've gotten together. Please don't forget us – we're here and thinking about you.

Since we are not having in person meetings for the foreseeable future, please remember to keep your *Cascade Woodturner's* library books, magazines, and videos in a place you can find them, so that when we do start having meetings again (or have another system in place), you will be able to return them to us. We would be happy to remind you of what you have checked out, except the card boxes are in the storage crate at the carpenter's center...we didn't foresee us being in the middle of a pandemic. Not sure how we missed it coming. Anyway, please, please keep track of the books, videos, magazines, and anything else you may have. Thank you!

Len (print material) and Suzanne (digital collection)

Thanks Jerry!

*Len & Suzanne*

Len Otto

[Len@HonorYourPast.com](mailto:Len@HonorYourPast.com)

H: 503-663-0794 C: 503-200-8193

## CASCADE FORUM

**Q & A** Forum for Cascade WoodTurners

The Website for Cascade WoodTurners now has a Question & Answer discussion Forum for all members to ask questions pertaining to woodturning issues, and for all members to respond with their thoughts and perspectives. Pictures can easily be attached to help clarify issues. By using this discussion forum, all members can reap the benefits of our member's wisdom, as well as appreciate that others may have the same issues and problems as we do.

Only Logged In members may enter questions or replies.

To access this Q & A Forum, once logged in, go to the 'Members Only' segment (in the horizontal menu under the 'Cascade WoodTurners Association' banner) and click on 'Forums', and then on the 'Q & A'. (Other forums are planned for our future)

Many different 'Topics' can/will be listed, with the latest topic entered at the top of the list. Members can select a Topic to read and/or Reply, or they can create a New Topic for discussion.

For those members interested in these discussions, at the top of the discussion page, there is a 'Subscribe/UnSubscribe' button. By subscribing, the member will get an Email notifying them of additions to the Q & A discussion forum, either new questions or new replies, and then at their leisure they can review the new input.

We hope that this addition will be of benefit to all our members and help us grow our skills and the craft. Feedback and comments are always welcome.

Steve Walgrave

## MEETING SCHEDULE 2021

DATE	DEMONSTRATOR	
MAR 18	<b>Carol Hall</b>	<i>Zoom meeting</i>
APR 15	<b>TBD</b>	
MAY 20	<b>Keith Gotschall</b>	<i>Zoom meeting</i>

\*\* Plan on an all day demo and an all day hands on class following the meeting date

## DEMOS - CLASSES – SEMINARS

*-Due to the Coronavirus cancellations check to see if the MAC is open or if our woodturning stores are still open and having classes or demos-*

**Multnomah Arts Center:** Multnomah Arts Center in SW Portland continues to have woodturning classes. Check their catalog or phone 503 823 2787. You can goggle their website for the catalog. Jerry Harris and Russ Coker are again teaching woodturning at "Multnomah Arts Center". If you are interested, please contact Multnomah Arts Center at 503 823 2787. The cost is very reasonable and all tools, wood and equipment is provided. The woodturning classes that I teach at the Multnomah Arts Center in SW Portland continue to be only partially filled. There are 6 places and we have only been having 2 to 4 students. The costs for the classes are very reasonable and we provide tools, equipment and wood. No coffee but Starbucks is just across the street. Thanks, Jerry Harris

**Rockler Woodworking** 503-672-7266, [www.rockler.com](http://www.rockler.com)

- Contact store for class details

**Woodcraft** 503-684-1428, [www.woodcraft.com](http://www.woodcraft.com)

- Contact store for class details

**Woodcrafters** 503-231-0226, 212 NE 6th Ave, Portland, [www.woodcrafters.us](http://www.woodcrafters.us)

- Contact store for demo details

## COMPANY STORE

*The Store will be carrying a second type of Sheet Abrasive for our members. Keeping the Klingspor quality while offering a new line of sandpaper. Which will reduce your cost of sandpaper and decrease your lathe time. We are currently offering Silicon Carbide (wet and dry), as of the next meeting you can purchase Aluminum Oxide in sheets of 9" x 11" and 80 to 400 grit.*

Through the club, we purchase many items that are commonly used by woodturners. We buy in bulk and sell at cost. Just another benefit of being a member of Cascade Woodturners! If a number of members want a certain item, we could be low on it.

Cascade WoodTurners now has an online STORE for your turning supplies!

Since we are not having in-person meetings, and until we do, we have created an online store for you, our members. You will find it on the Cascade Website, in the Members Only section. Orders and payments are all handled online. Then, once a month a location will be identified as the order pick-up location, hopefully centralized based on the orders. Try it, you'll like it!

### Price List

<b>Sandpaper</b>	
<b>Black</b> KL 385 J-Flex Heavy cloth backing	
80   100   120   150   180   220   240   320   400   600 grits	<b>1.50</b>
<b>White</b> PS-33 paper backing	
80   100   120   150   180   220   240   320   400 grits	<b>0.80</b>
<b>4" x 6" 12 Pack Sandpaper (1/4" sheet)</b>	<b>2.50 Per Pack</b>

<b>Cyanoacrylate (Ca) Glue (2 oz)</b>	<b>7.00</b>
Thin Super Fast EM-02	
Medium EM-150	
Thick Gel EM-2000	
Medium Thick EM-600	
<b>Ca. Accelerator (8oz) pump spray</b>	<b>9.00</b>
<b>Large Ca. Glue (16oz)</b>	<b>33.00</b>
Super Fast Thin EM-02	
<b>Gel De-bonder (2 oz)</b>	<b>7.00</b>
<b>Anchor Seal #2 (1gal)</b>	<b>8.00</b>
<b>Walnut Oil (16oz)</b>	<b>4.00</b>

Tee shirts currently out of stock – Reorder can be made for quantity orders

Tee Shirts	\$10.00 ea
------------	------------

### CLASSIFIEDS

To place or continue an ad, contact Jerry Klug at [turningwood@bendbroadband.com](mailto:turningwood@bendbroadband.com) . We will run ads in the next newsletter after receiving your ad. Let us know if you want your ad continued more than one month.

**FOR SALE:** Oneway Spindle Steady Part No. 3280 with 1 ¾ inch gap bed clamp (for Oneway lathe). Used, but good shape. I thought I was buying the bowl steady. New ones are about \$130 plus \$20 for the clamp. \$75 or trade for a bowl steady or maybe something else. John Replinger 503-719-3383

**FOR SALE:** 1980 Ford F-350 Std Cab Pick Up Truck. About 30,000 miles on engine rebuild, Auto trans, 2 speed Beaver 10K winch, Great log hauler. \$7500 Skip Burke (503) 233-4263  
[drgramp@comcast.net](mailto:drgramp@comcast.net)

## CASCADE WOODTURNERS OFFICERS AND CONTACTS

President	Gary Borders	(360) 609-1241	<a href="mailto:GBBorders@comcast.net">GBBorders@comcast.net</a>
Vice President	Suzanne Jensen	(772) 521-5102	<a href="mailto:suz.jensen@gmail.com">suz.jensen@gmail.com</a>
Treasurer	Ken Kirkman	(360) 687-9866	<a href="mailto:kenpegkirkman@gmail.com">kenpegkirkman@gmail.com</a>
Secretary	Steve Walgrave	(503) 997-6378	<a href="mailto:woodsven13@gmail.com">woodsven13@gmail.com</a>
Safety Officer	Harvey Rogers	(646) 660 3669	<a href="mailto:harveyrogers@gmail.com">harveyrogers@gmail.com</a>
Member at large	David Williams	(503) 997-2541	<a href="mailto:dwilliams97007@yahoo.com">dwilliams97007@yahoo.com</a>
Member at large	Russ Coker	(503) 701-2508	<a href="mailto:racoker@comcast.net">racoker@comcast.net</a>
Member at large	Tom Hansen	(360) 213-6712	<a href="mailto:thansenhomestead@gmail.com">thansenhomestead@gmail.com</a>
Video Librarian	Suzanne Jensen	(772) 521-5102	<a href="mailto:suz.jensen@gmail.com">suz.jensen@gmail.com</a>
Librarian	Len Otto	(503) 663-0794	<a href="mailto:Len@HonorYourPast.com">Len@HonorYourPast.com</a>
Company Storekeeper	Steve Walgrave	(503) 997-6378	<a href="mailto:woodsven13@gmail.com">woodsven13@gmail.com</a>
Web Mistress	Kathleen Duncan	(360) 574-0955	<a href="mailto:woodspinner@gmail.com">woodspinner@gmail.com</a>
Newsletter Editor	Jerry Klug	(541) 550-6299	<a href="mailto:turningwood@bendbroadband.com">turningwood@bendbroadband.com</a>
Mentor Coordinator	Skip Burke	(503) 233-4263	<a href="mailto:drgramp@comcast.net">drgramp@comcast.net</a>

## CASCADE WOODTURNERS SPONSORS

Support of the sponsors listed helps maintain our hobby supplies. Remember that your current membership card is good for discounts at these firms

[Gilmer Wood Company](#) Exotic and Domestic Hardwood from Around the World  
[KLINGSPOR Abrasives, Inc.](#)      [Rockler Woodworking & Hardware](#)  
[Woodcraft Supply](#)      **Woodcrafters**      Carbide Saw





CRAFT SUPPLIES USA *The Woodturners Catalog* [www.woodturnerscatalog.com](http://www.woodturnerscatalog.com)  
1287 E 1120 S Provo, UT 84606 801-373-0919

### CARBIDE SAW

Sales & Sharpening



4040 SE Division  
Portland, OR 97202

### Tad Wille

- Saws
- Custom Cutters
- Routers
- Bandsaws
- Knives
- Abrasives

Ph: 503-235-2260  
Fx: 503-233-1807

**WOODCRAFTERS**  
*Everything for the Woodworker, and More!*

Check Out Our  
Woodturning Lathes  
& Accessories from  
**ONEWAY**  
MANUFACTURING

**POWERMATIC**

**JET**  
Domestic & Exotic Hardwoods,  
Sharpening & Finishing Supplies

**Razor-Sharp Edge**  
- M42 Cobalt HSS

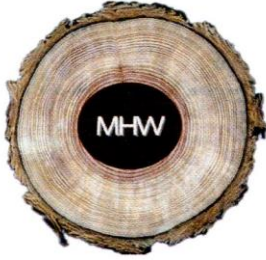
**Strong Handles**  
- Made with solid aircraft grade aluminum

**Reduced Chatter**  
- A round bit fits into a round hole for reduced chatter  
- Our solid aluminum handles greatly reduces vibration

**Carter and Son Toolworks**  
Quality At Its Best  
Made in the USA

212 N.E. Sixth Ave. • Portland, Oregon 97232-2976 • phone: 503-231-0226 • toll-free: 800-777-3709 • [www.woodcrafters.us](http://www.woodcrafters.us)

## Turning Times



Milwaukie Hardwoods, LLC

- ◆ Turning stock, Burl, Spalted Wood, Slabs and lumber available
- ◆ 10% discount to CWT members
- ◆ Portable milling, transporting, drying and sale of locally harvested urban hardwoods

5111 SE Lake Rd, Milwaukie OR 97222

[www.milwaukiehardwoods, LLC,](http://www.milwaukiehardwoods.com)

**503-309-0309**